

Land Quality Update

Erosion and Sedimentation Control Planning
and Design Workshop

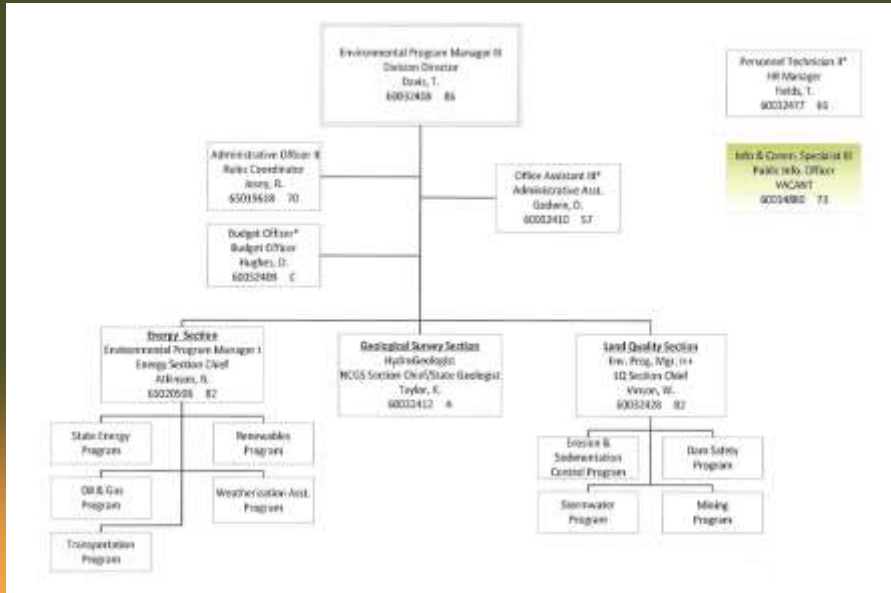
December 2, 2014

W.E. Toby Vinson, PE, CPESC

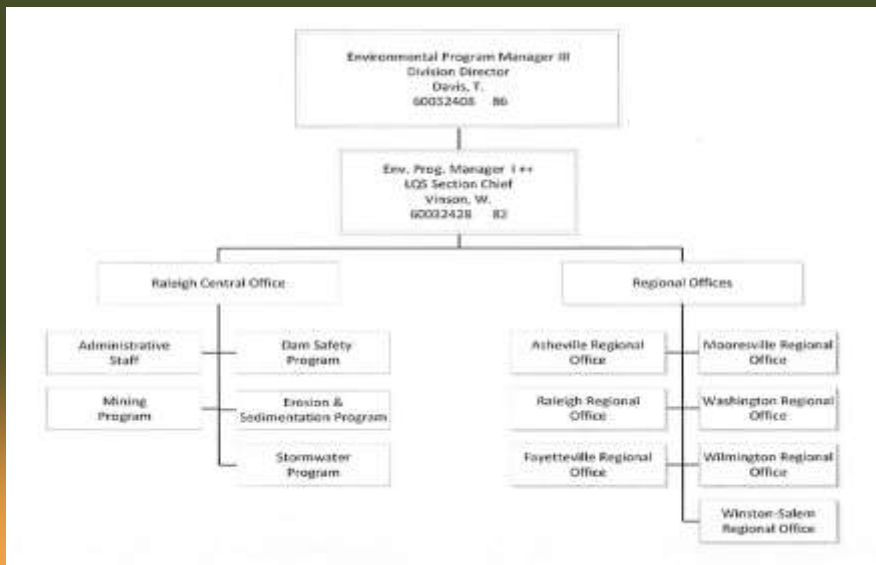
Topics

- DEMLR Reorganization, Program Integration / Combined Inspections and Enforcement
- Energy Program
- Customer Service Activities
- Regulatory Updates

Land Quality Section O-Chart, August 1, 2014



NC Land Survey Quality Section



NC Land Quality Section

➤ Winston-Salem Regional Office –

- New Office and Contact Information

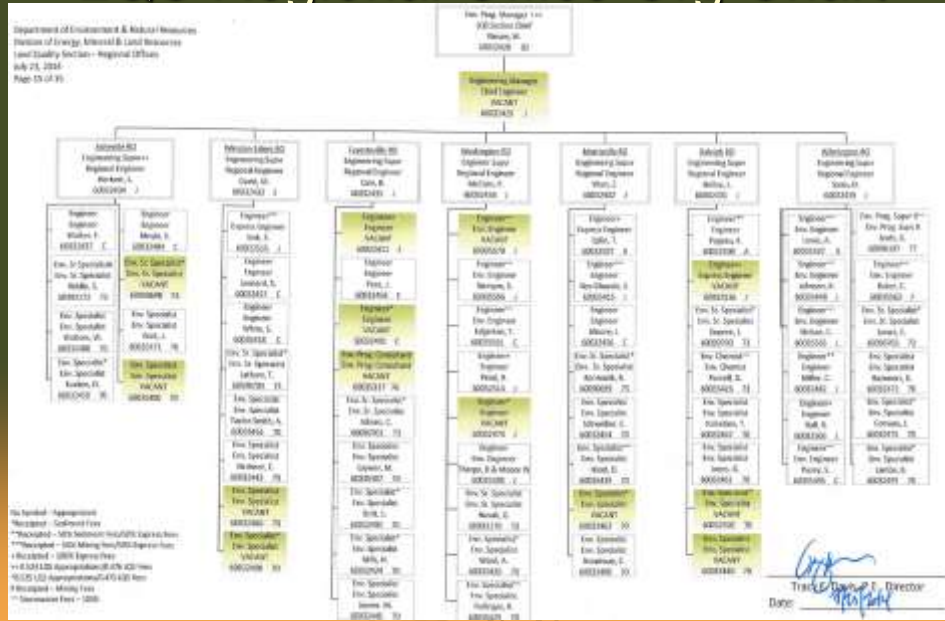
- Address:

450 West Hanes Mill Road, Suite 300,
Winston-Salem, NC 27105

- Phone:

(336) 776-9800

LQS Regional Office Org Chart



Integration of Stormwater Program w/ Land Quality

- Reg. Offices, 21 FTEs, Cent. Office 9 FTEs
- Cross-Training into existing programs
 - Sediment Program
 - Mining Program
- “Fast-Track Permitting”
 - Minimum Design Criteria
 - Technical Working Group
 - Rules by July 2016
 - Includes State and locally delegated state programs (permits w/out review of devices)

Combined Inspections

- With E&SC Program
- Enforcement with E&SC Program
- With Mining Program - will begin Formal Industrial NPDES Cross-Training in 2015

Combined Self-Inspection Form

DEMUR Monitoring Form Rev. 08/12/13 Page 1 of 3
INSPECTION AND MONITORING RECORDS FOR ACTIVITIES UNDER STORMWATER GENERAL PERMIT HCG016688 AND SELF-INSPECTION RECORDS FOR LAND DISTURBING ACTIVITIES PER 0.5, 1TJM-54.1

Project Name		Land Quality or Local Program Project #
Financially Responsible Party (FRP) / Permittee		County
INSPECTOR		
Inspector Type (Check)	Name	
FRP/Permittee	Title	
Agent/Designee	Phone Number	Street Address

PART 1A: Rainfall Data

Day / Date	Rain Amt (inches) Daily Rainfall Required, except for Holidays or Weekends. If no rain, indicate with a "zero"
M	
T	
W	
Th	
F	
Sat (Optional)	
Sun (Optional)	

PART 1B: Current Phase of Project

Phase of Grading (check the applicable boxes)	
Installation of perimeter erosion and sediment control measures	<input checked="" type="checkbox"/>
Clearing and grading of existing ground cover	<input type="checkbox"/>
Completion of any phases of grading of slopes or fills	<input type="checkbox"/>
Installation of storm drainage facilities	<input type="checkbox"/>
Completion of all land disturbing activity, construction or development	<input type="checkbox"/>
Permanent ground cover sufficient to reduce erosion risk from established	<input type="checkbox"/>

PART 1C: Signature of Inspector

By this signature, I certify in accordance with the HCG016688 permit & 0.5, 1TJM-54.1 that this report is accurate and complete to the best of my knowledge.

Financially Responsible Party / Permittee or Agent / Designee _____ Date _____

GROUND STABILIZATION TIMEFRAMES

Site Area Description	Stabilization	Timeframe Exceptions
Perimeter dikes, swales and slopes	7 Days	None
High Quality Water (HQW) Zones	7 Days	None
Slopes Steeper than 3:1	7 Days	If slopes are 10' or less in length and are not deeper than 2'-1, 14 days are allowed
Slopes 3:1 or flatter	14 Days	7 days for slopes greater than 50' in length
All other areas with slopes flatter than 4:1	14 Days	None, except for perimeters and HQW Zones

The available copy of this form as a Word doc and other information, see <http://portal.ecderr.org/web/inspector-records>

Combined Self-Inspection Form

DEMUR Monitoring Form Rev. 08/12/13 Page 2 of 3

PART 2A: EROSION AND SEDIMENTATION CONTROL MEASURES: Measures must be inspected at least ONCE PER 7 CALENDAR DAYS AND WITHIN 24 HOURS OF A RAINFALL EVENT GREATER THAN 0.5 INCH PER 24 HOUR PERIOD.

Erosion and Sedimentation Control Measures Inspected

Measure ID or Location and Description	Operating Property? (Y/N)	Any Repair or Maintenance Needed? (Y/N)	New Measures Installed *			Inspection Date	Describe Actions Needed Corrective actions should be performed as soon as possible and before the next storm event	Date Corrected
			Proposed (S.I.)	Actual (S.I.)	Significant Deviation from (S.I.) (Y/N)			

*New erosion and sedimentation control measures installed since the last inspection should be documented here or by listing and dating each measure or practice shown on a copy of the approved erosion and sedimentation control plan. List Dimensions of Measures such as Sediment Basins and Riprap Aprons

PART 2B: STORMWATER DISCHARGE OUTFALLS (SDOs): SDOs must be inspected at least ONCE PER 7 CALENDAR DAYS AND WITHIN 24 HOURS OF A RAINFALL EVENT GREATER THAN 0.5 INCH PER 24 HOUR PERIOD.

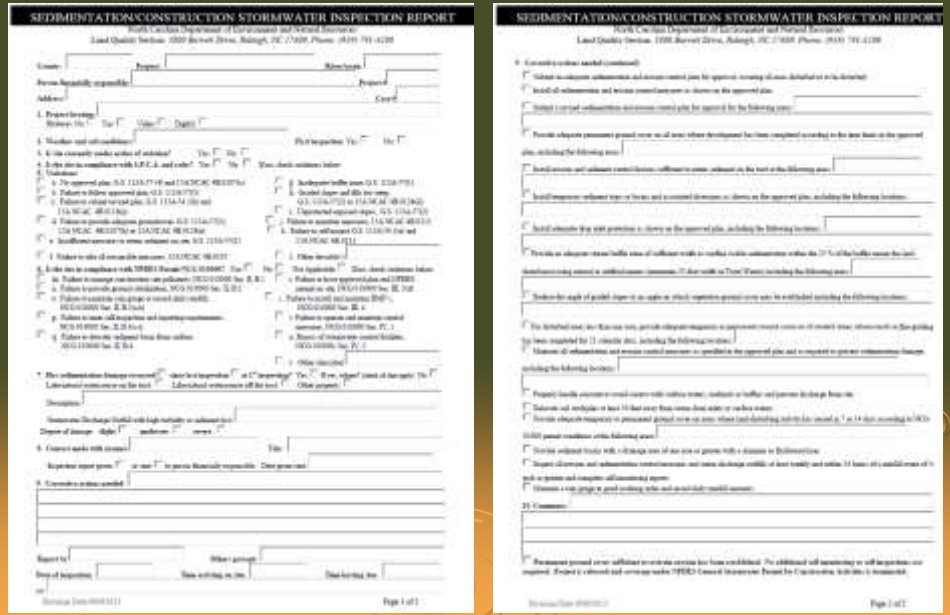
Stormwater Discharge Outfalls Inspected

Stormwater Discharge Outfall (or Location)	Any Visible Sedimentation in Streams, Wetlands or Outside Site Limits? (Y/N)	Any Increase in Stream Turbidity from Discharge? (Y/N)	Any Visible Erosion Below SDO? (Y/N)	Any visible oil, silt, sludge or suspended solids or other material? (Y/N)	Inspection Date	Report Visible Sedimentation to streams or wetlands to Land Quality within 24 Hours http://portal.ecderr.org/web/inspector-contacts	Describe Actions Needed Corrective actions should be performed as soon as possible and before the next storm event	Date Corrected

PART 2C: GROUND STABILIZATION Must be recorded after each Phase of Grading

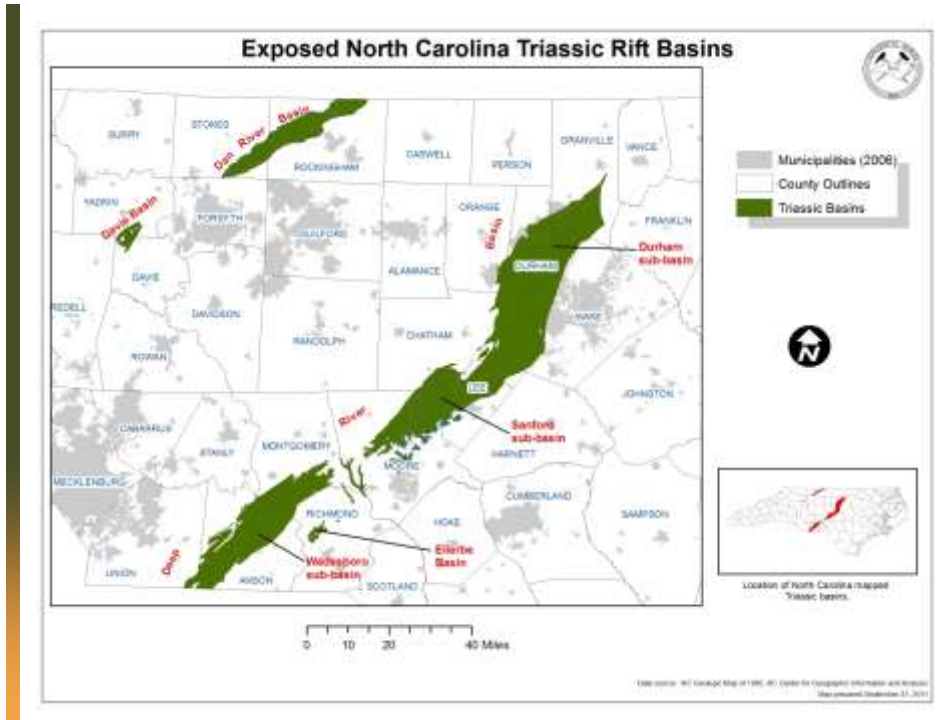
Areas Where Land Disturbance Has Been Completed or Temporarily Stopped	Time Lapse for Ground Cover (Days or %)	Is Ground Cover Sufficient to Reduce Erosion? (Y/N)	Inspection Date	Describe Actions Needed	Date Corrected

Combined ESC/CSW Inspection Report



Energy Program

- Oil and Gas Program
- State Energy Program
- Weatherization Program



Oil and Gas Development

- Coordinated Permitting for Single Environmental Permit?
- Site Development (Fees, Impact Fees)
- Bonding
- Production (Severance Taxes)
- Reclamation

Mining and Energy Commission

- O & G rules have been passed through to RRC and Legislature
- Restructured to be two separate Commissions on August 1, 2015
 - Energy Commission
 - Mining Commission

Customer Service Activities

- Workshops – 2 in Fall (November 19 and December 2); 2 in Spring (Dates TBA)
- Informal Appeal Processes
 - 1 – For new technologies, (to staff PE)
 - 2 – For Statute or Rule Reference, (to Supervisor)
- Piloting Fast Track Erosion and Sediment Control in MRO
- Electronic Permitting and Inspections

Erosion and Sediment Control Program Fast Track Pilot Program

- This is not required. It is an option.
- Response has been positive.
- Limited to residential home-building with individual lot disturbance less than 1 acre and total site disturbance less than 5 acres
- Lots are finished or at final grade.
- No change in general drainage pattern
- Not in HQW, No wetlands or creeks within 100 feet
- Expected time of review is 15 days

Electronic Permitting and Inspections

- AMANDA – ECLIPS
 - Back Office – June 2014
 - Portal – January - February 2015
 - Mobile Inspections – August 2014

Regulatory Updates

- Review State Environmental Rules –
 - Stormwater – 2014-15
 - Sediment – 2015-16
 - Mining – 2016
 - Dam Safety - 2017
- Gravel –
- Informal Appeal Processes
 - 1 – For new technologies, (to staff PE)
 - 2 – For Statute or Rule Reference, (to Supervisor)

Questions???

W.E. Toby Vinson, PE, CPESC, CFM, CPM
Chief of Land Quality Section

E-Mail: toby.vinson@ncdenr.gov

Phone: (919) 707-9220