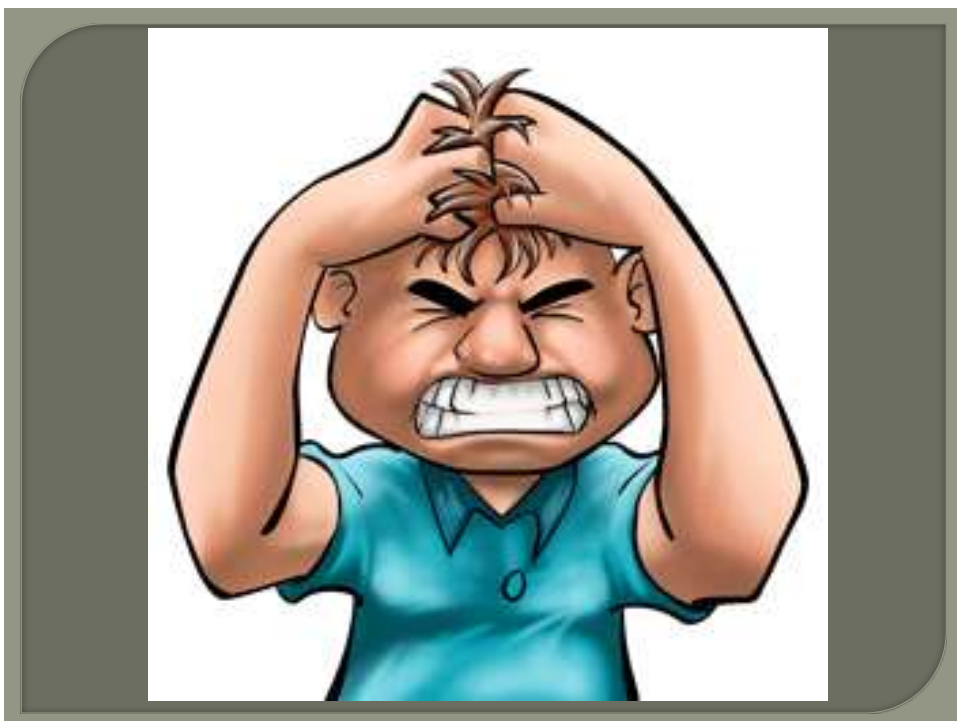


# 4C Basins to BMP's

Michael Horan, CPESC  
City of Wilson Local Program











# 4C Method

## Communication, Consideration, Cooperation and Consistency

## *SOP* (Standard Operating Procedure)

### ◉ Decommissioning a sediment basin

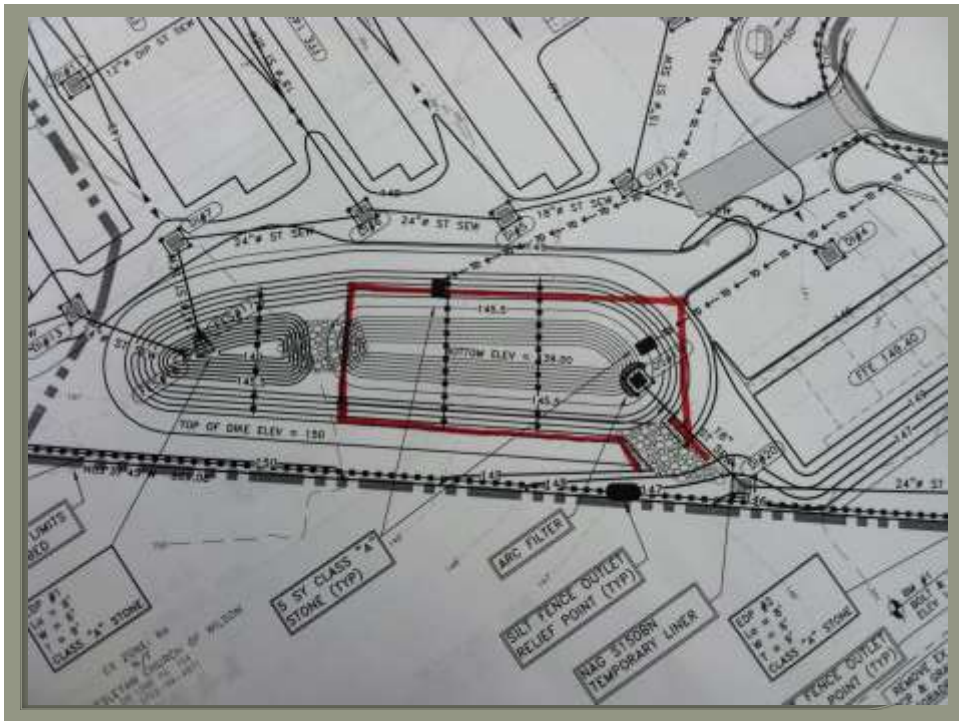
1. Call for an on-site determination/meeting when requesting to decommission/phase out a temporary sediment basin.
2. Determination can only be made by the Local Program Erosion Control Specialist and/or his or her equivalent
3. Once it has been determined that the temporary sediment basin can come out it must be marked and initialed by the inspector on the approved set of erosion control plans.
4. If sediment basin has water in it, the water must be pumped out from the surface into a filter bag on a level area free of debris or another approved method at non-erosive velocities.
5. Remove skimmer and plug any holes in the riser (if applicable), remove all baffle materials.
6. Basin must be cleaned out to existing constructed grade then filled in with like material.
7. Fill or convert basin as to the approved elevation or product on the approved plans.
8. After final grading has been completed area must be stabilized with lime, seed, fertilizer, straw and tack according to the City of Wilson's seeding application rates and specs.
  - a. Seeding must be done within 7 days of grading on slopes steeper than 3:1 and 14 days for all other.

# 4 C Method

## Communication

An open line of communication can do wonders. It will help others directly involved to have a better understanding of what you expect from them and what they can expect from you.







Engineers, do you have a sequence for the removal of the basin or converting it?





## *Taking out/converting a sediment basin*

- 1. Call for an on-site determination/meeting when requesting to decommission/phase out a temporary sediment basin.*



*Taking out/converting a  
sediment basin*

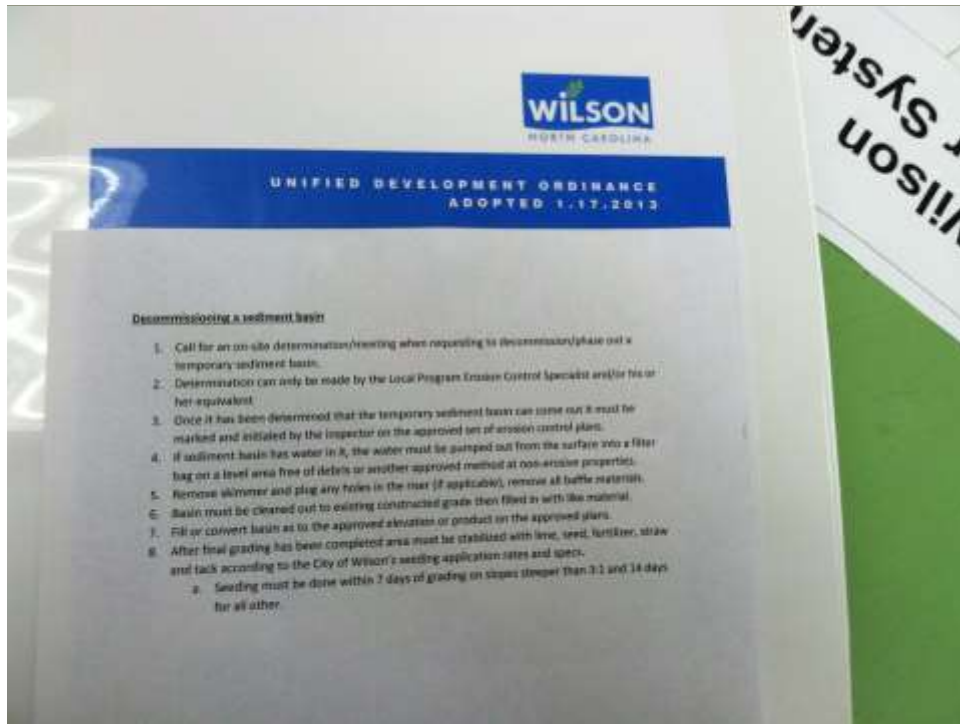
Determination can only be made by the Local Program Erosion Control Specialist and/or his or her equivalent.



## ***SOP** (Standard Operating Procedure)*

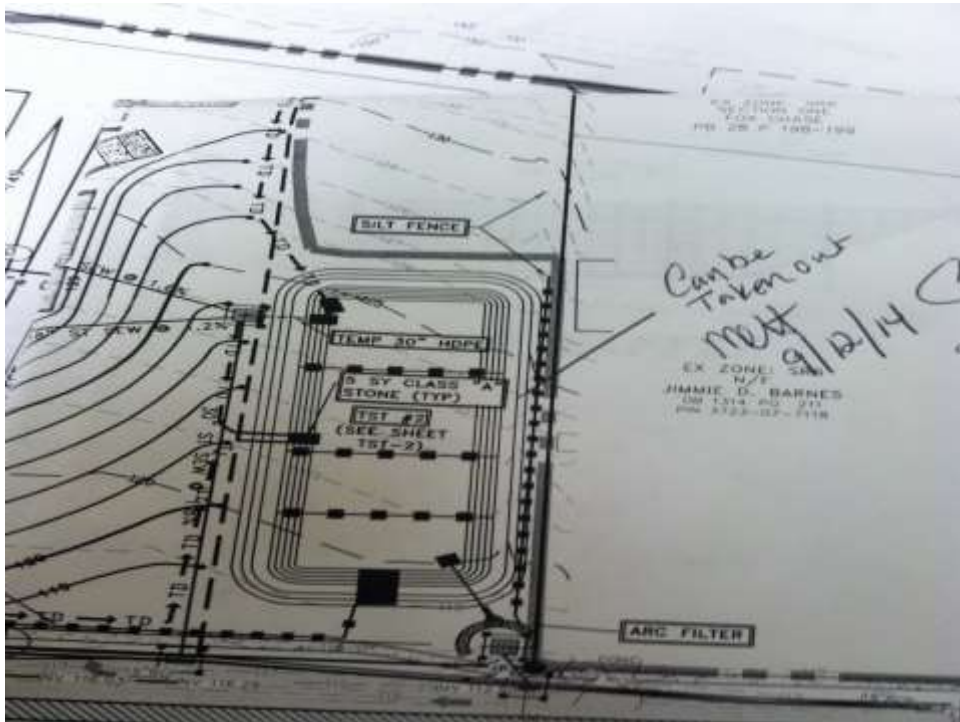
### ⦿ **Decommissioning a sediment basin**

1. Call for an on-site determination/meeting when requesting to decommission/phase out a temporary sediment basin.
2. Determination can only be made by the Local Program Erosion Control Specialist and/or his or her equivalent
3. Once it has been determined that the temporary sediment basin can come out it must be marked and initialed by the inspector on the approved set of erosion control plans.
4. If sediment basin has water in it, the water must be pumped out from the surface into a filter bag on a level area free of debris or another approved method at non-erosive velocities.
5. Remove skimmer and plug any holes in the riser (if applicable), remove all baffle materials.
6. Basin must be cleaned out to existing constructed grade then filled in with like material.
7. Fill or convert basin as to the approved elevation or product on the approved plans.
8. After final grading has been completed area must be stabilized with lime, seed, fertilizer, straw and tack according to the City of Wilson's seeding application rates and specs.
  - a. Seeding must be done within 7 days of grading on slopes steeper than 3:1 and 14 days for all other.



Regulators do you have  
consistent plan of action?





# 4 C Method

## Consideration

Being considerate by looking at all avenues with everyone on the construction site. What about the contractor, the owner, and what is best for the environment?



# 4 C Method

## Co-operation

“...working or acting together for their common/mutual benefit”.....























## 4 C Method

### **Consistency/Consistent**

“Logically ordered and/or following the same pattern”

