

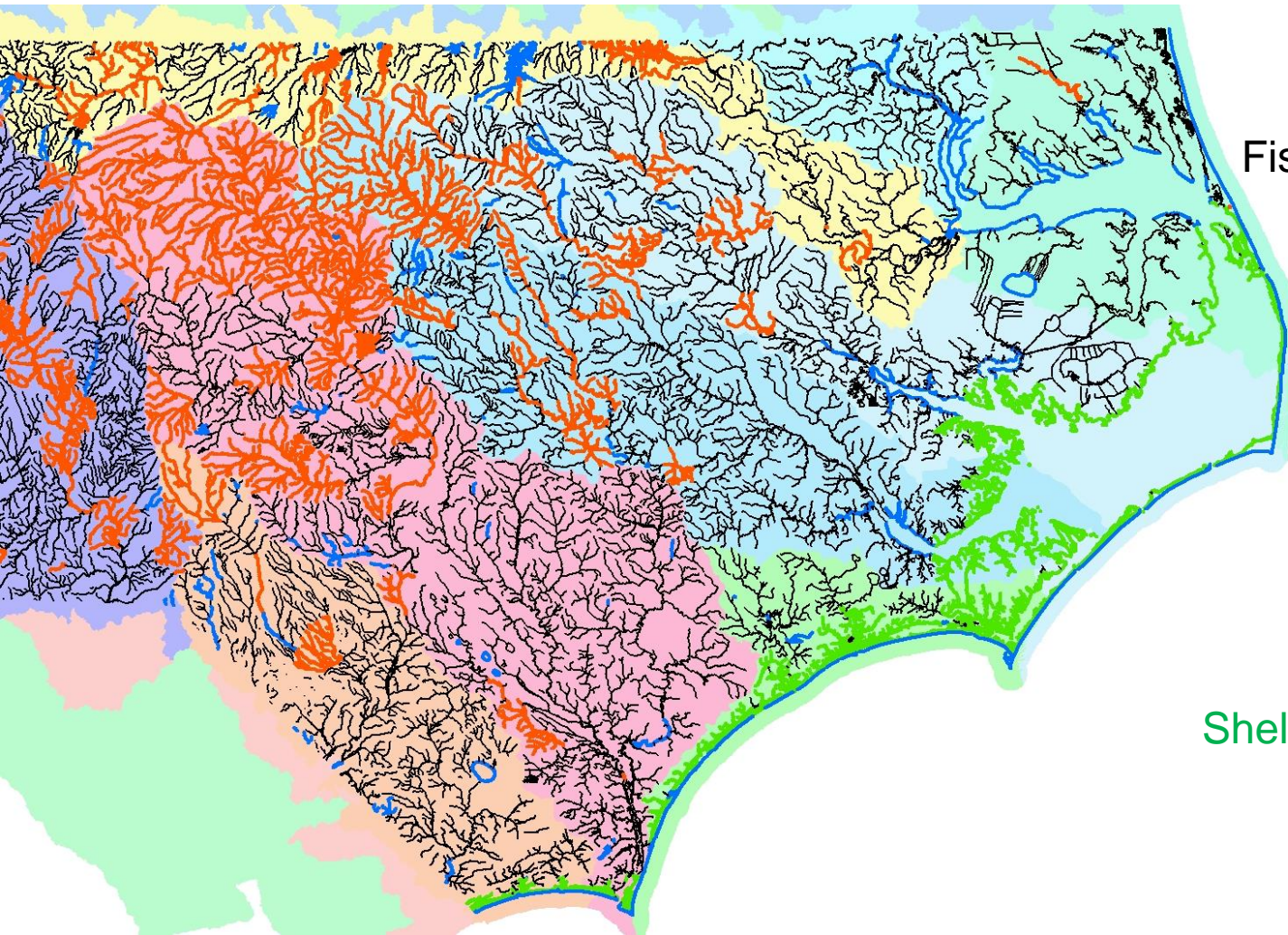


Cam McNutt and Amy
Keyworth, DWR

Surface Water and Groundwater Data



Water Quality Classifications



Aquatic Life

Fish Consumption

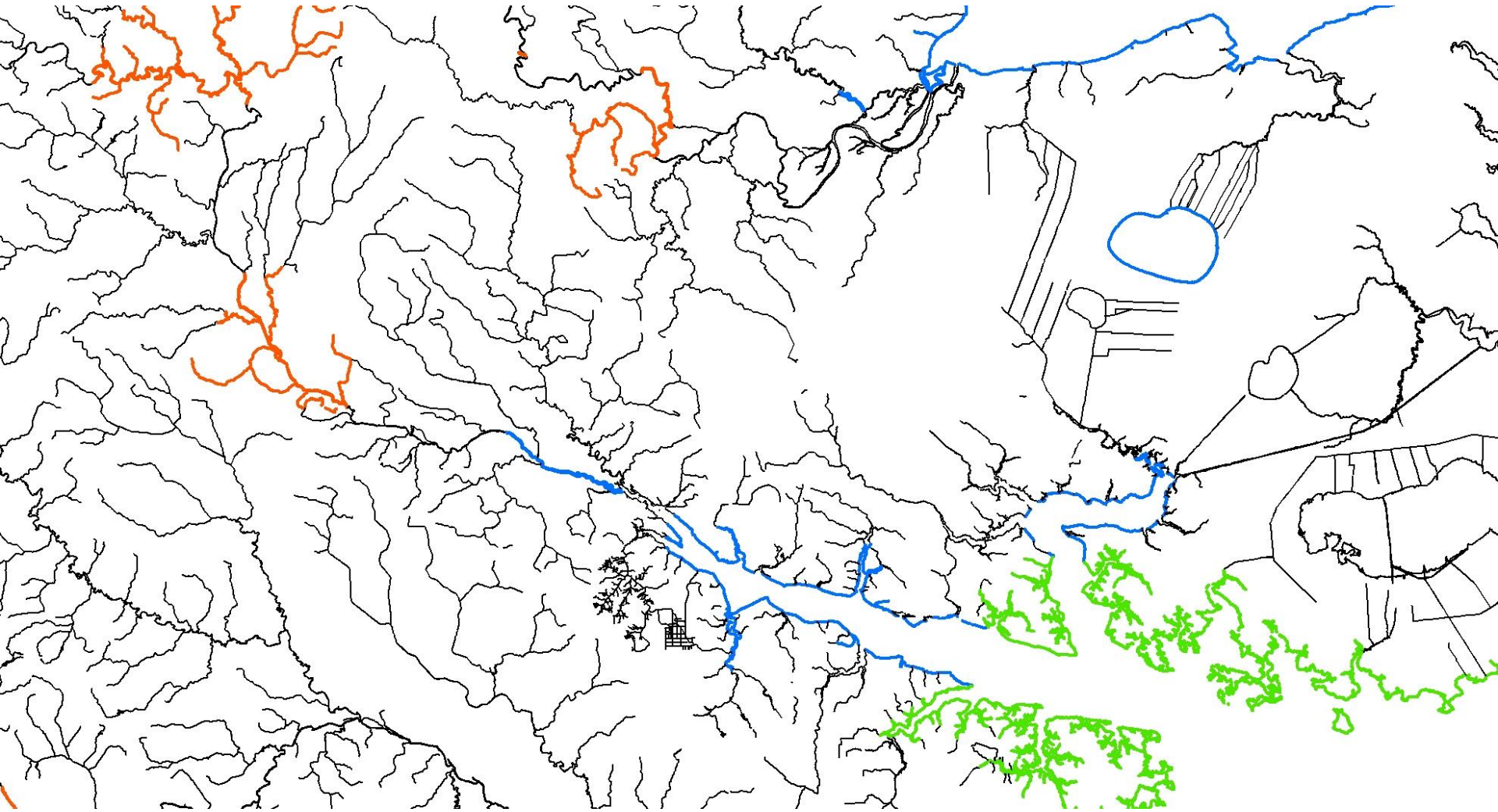
Water Supply

Recreation

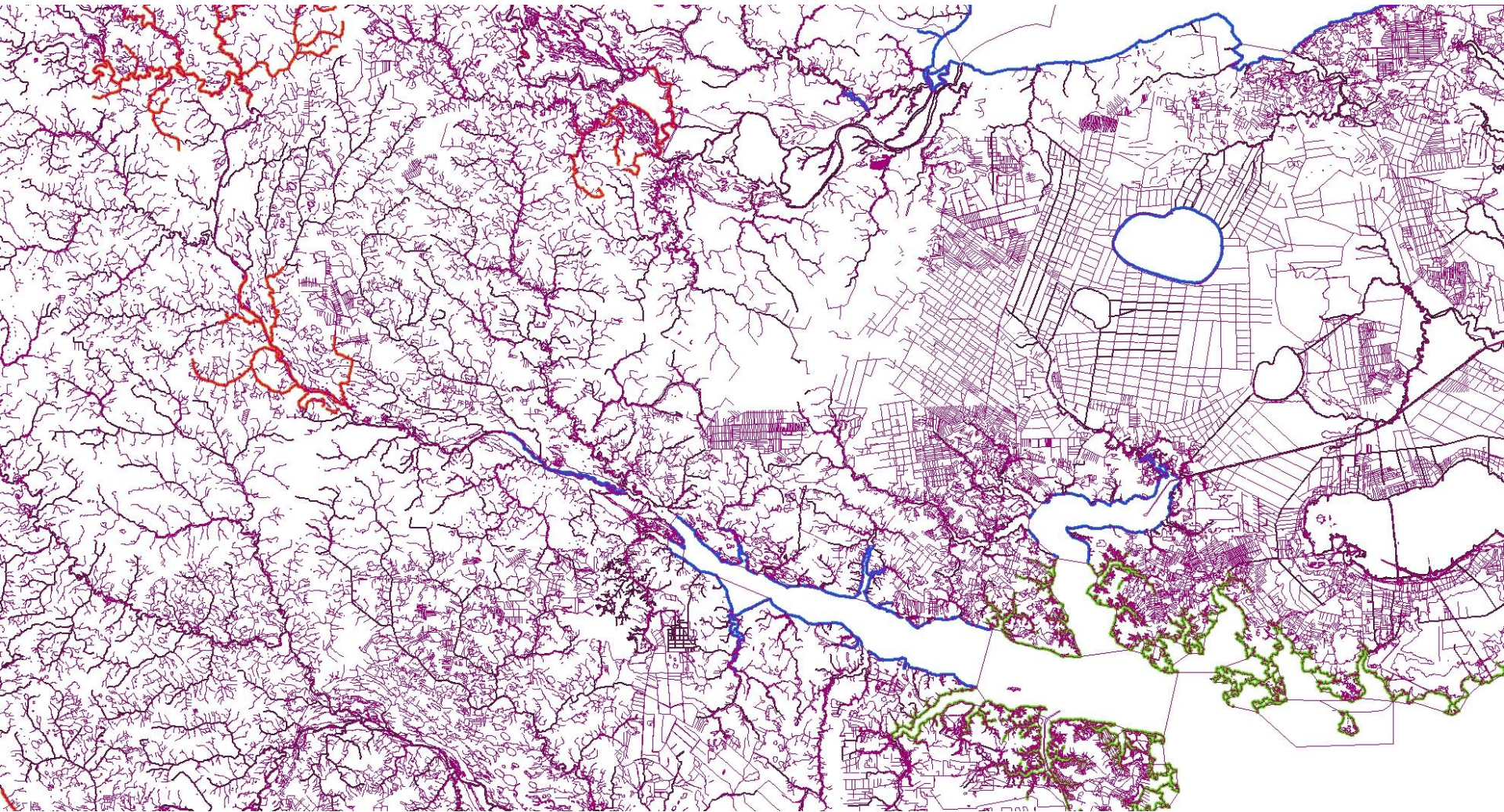
Shellfish Harvesting

nc dwr classifications

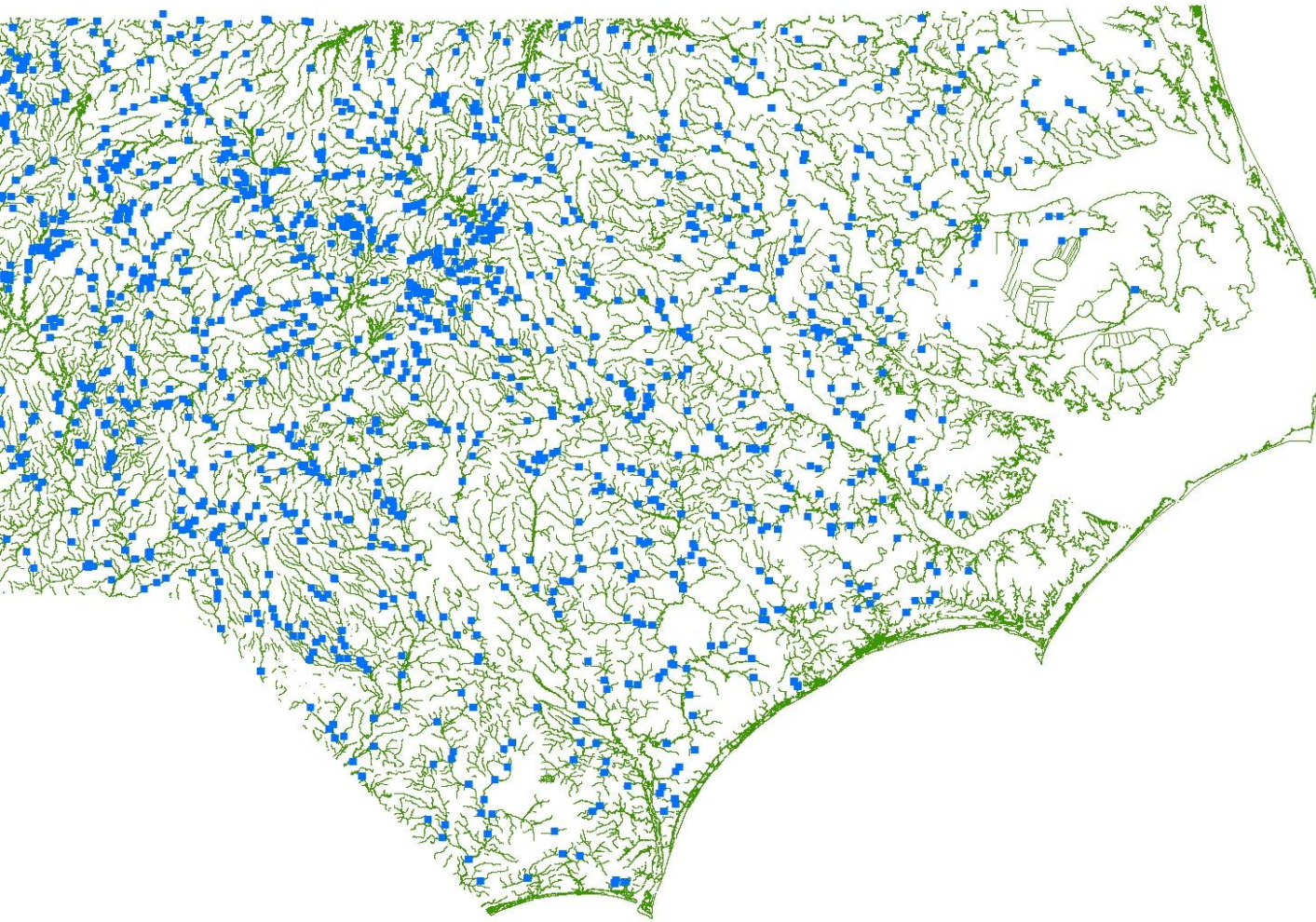
Named Streams 12,000



All Water Mapped Waters

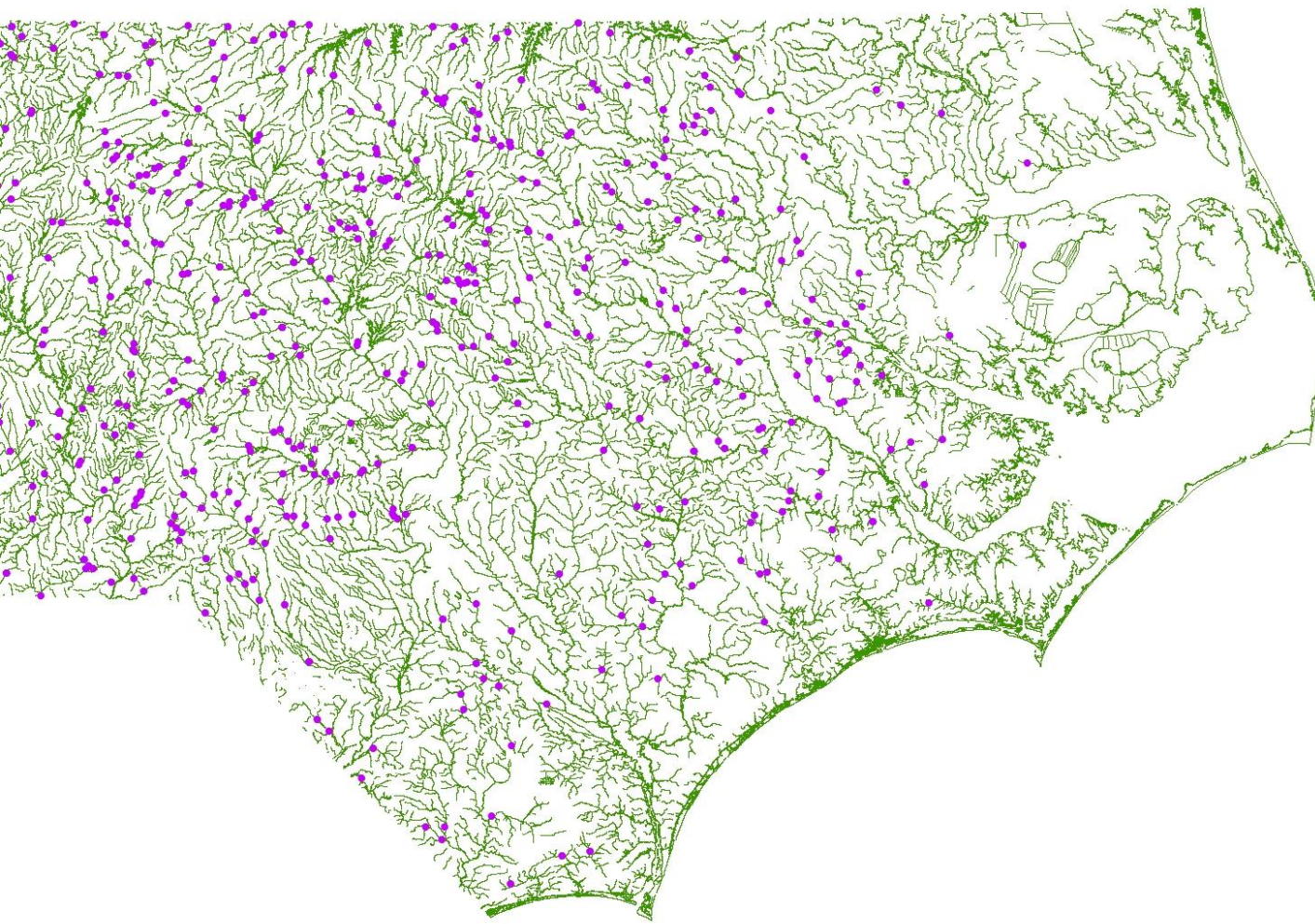


Benthos- Aquatic Life Assessment



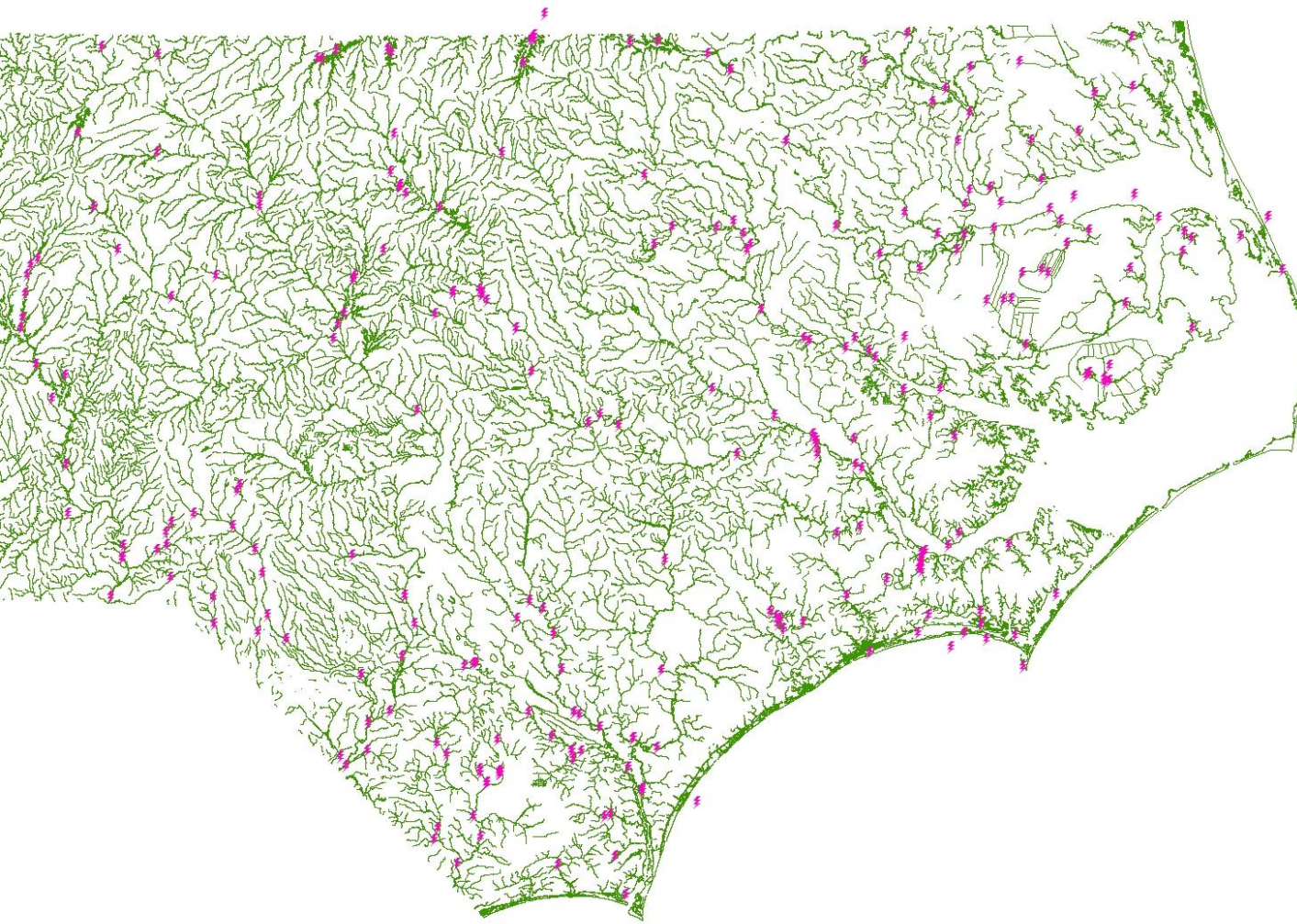
nc benthos

Fish Community- Aquatic Life Assessment



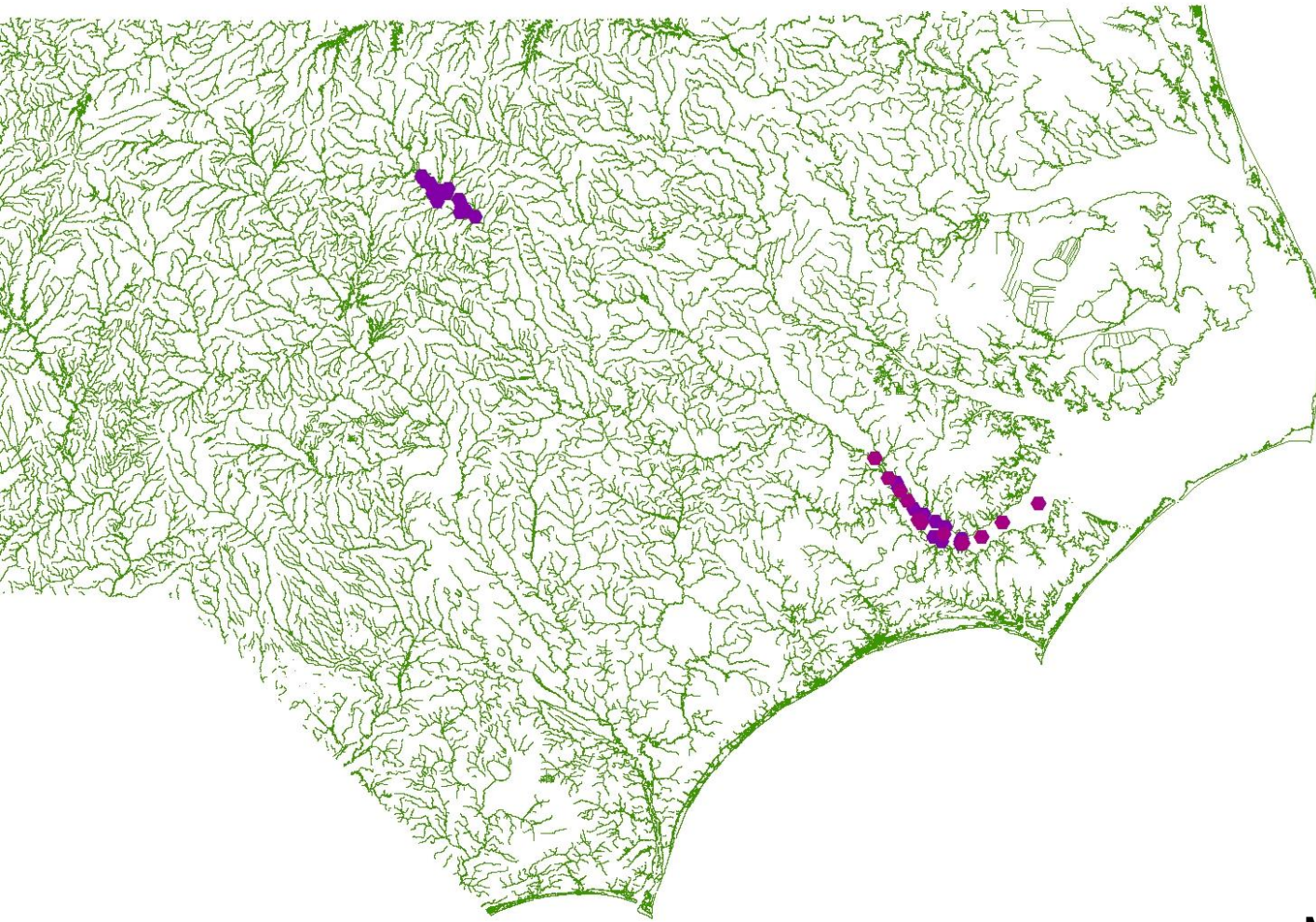
ncdeq fish community

Fish Tissue- Human Health



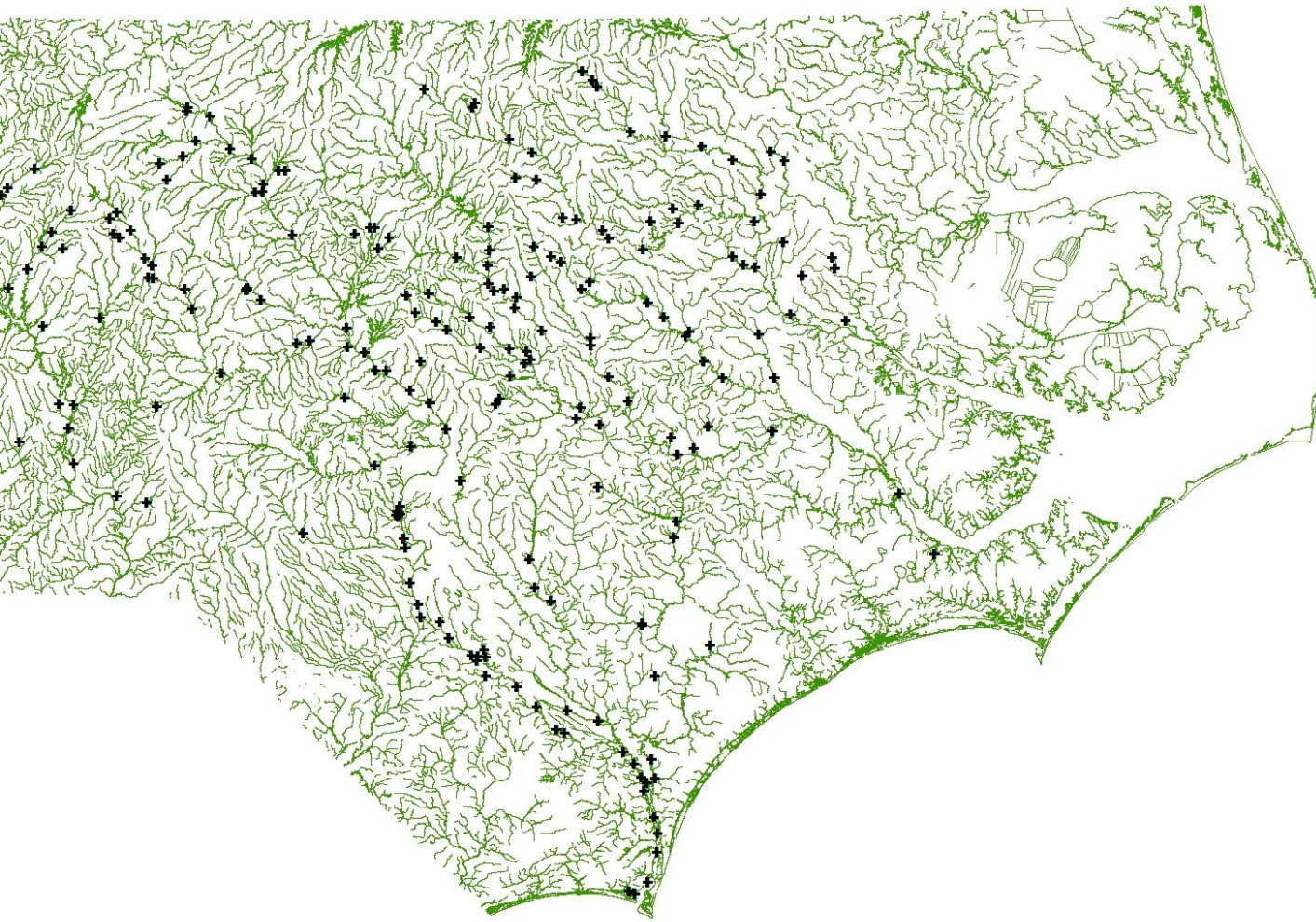
nc fish tissue

University- Multiple Uses



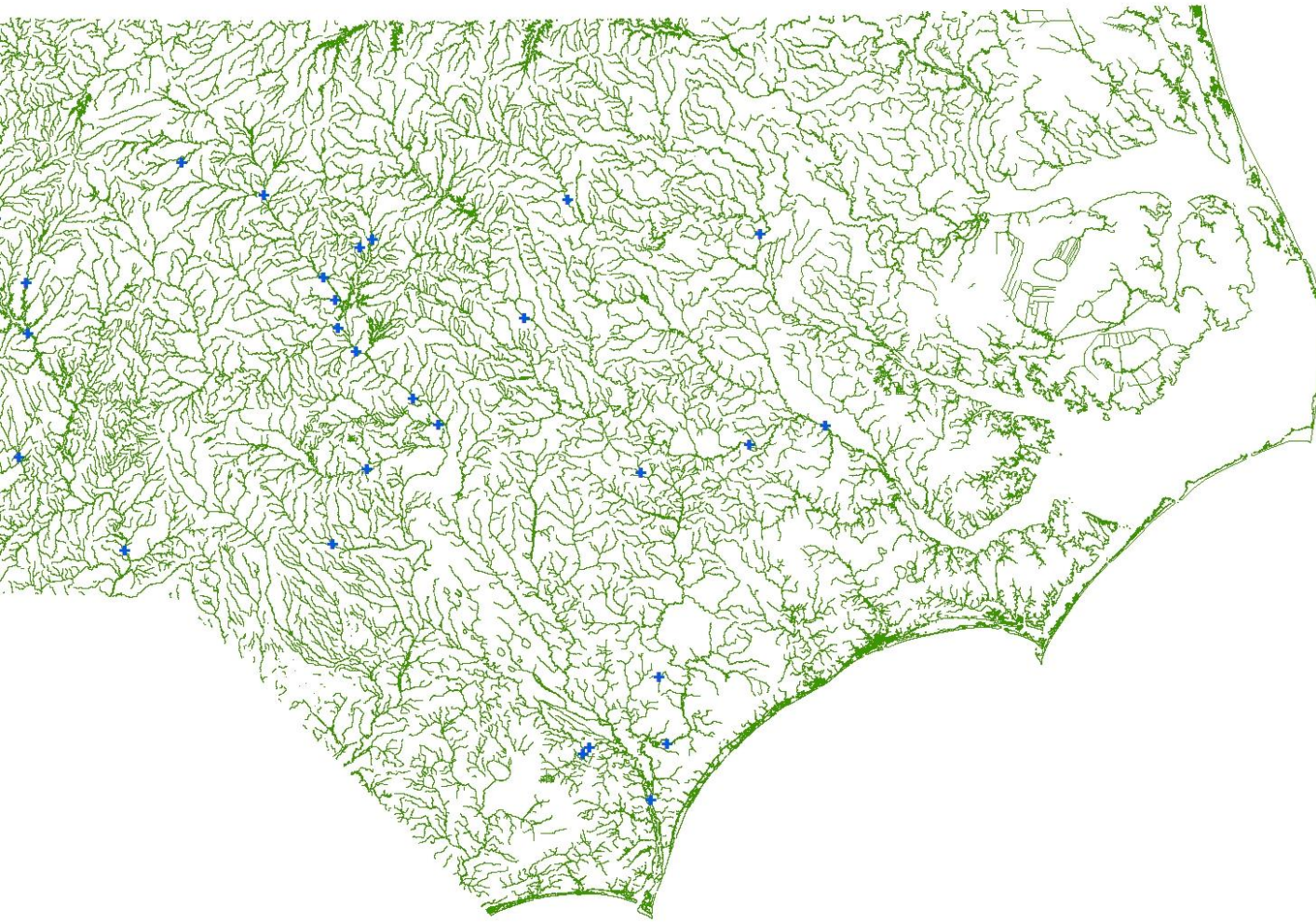
Modmon
nc aquatic ecology

Coalition- Multiple Uses



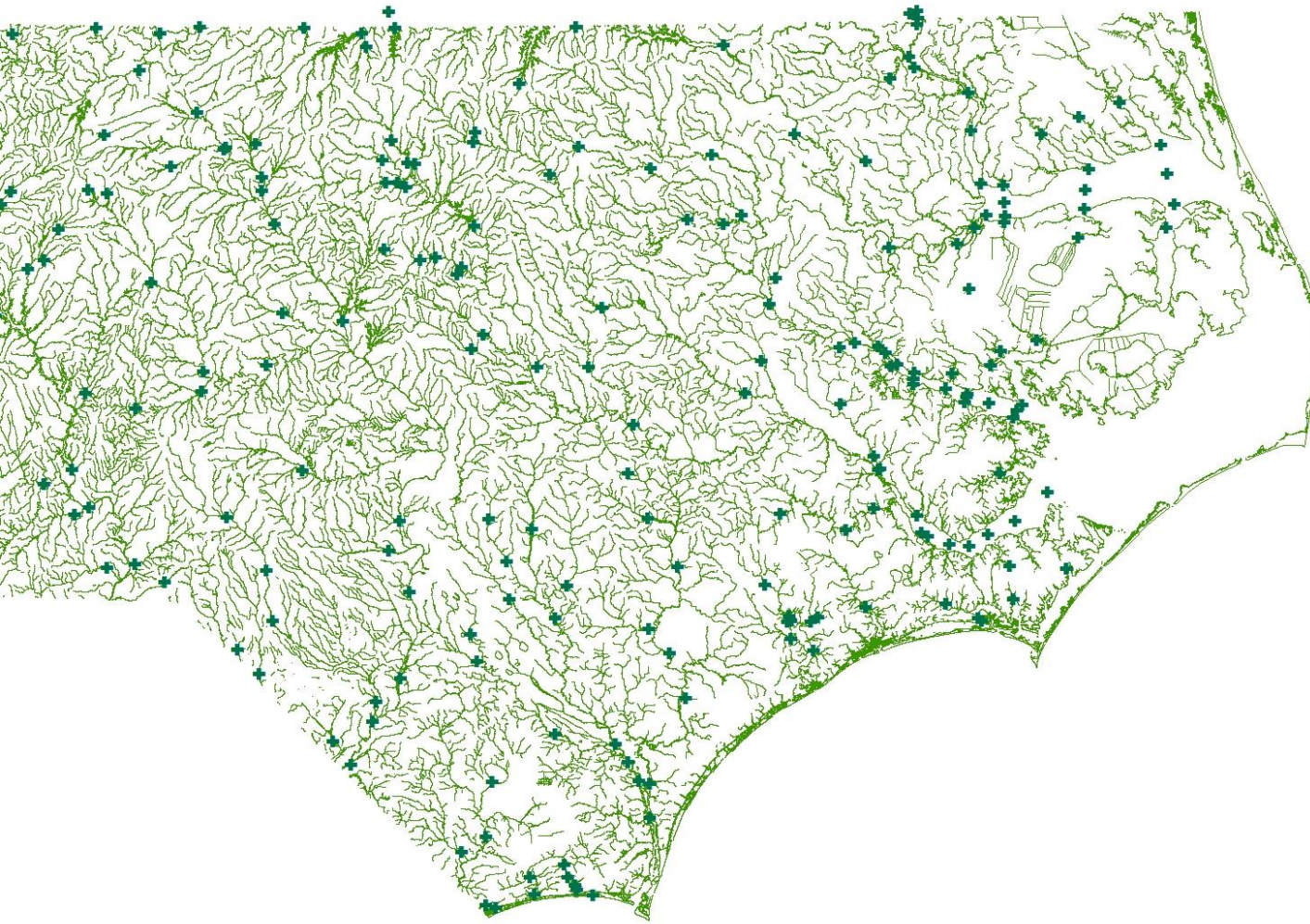
nc coalition monitoring

Multiple Agencies- Multiple Uses



nc coalition monitoring

DWR- Multiple Uses



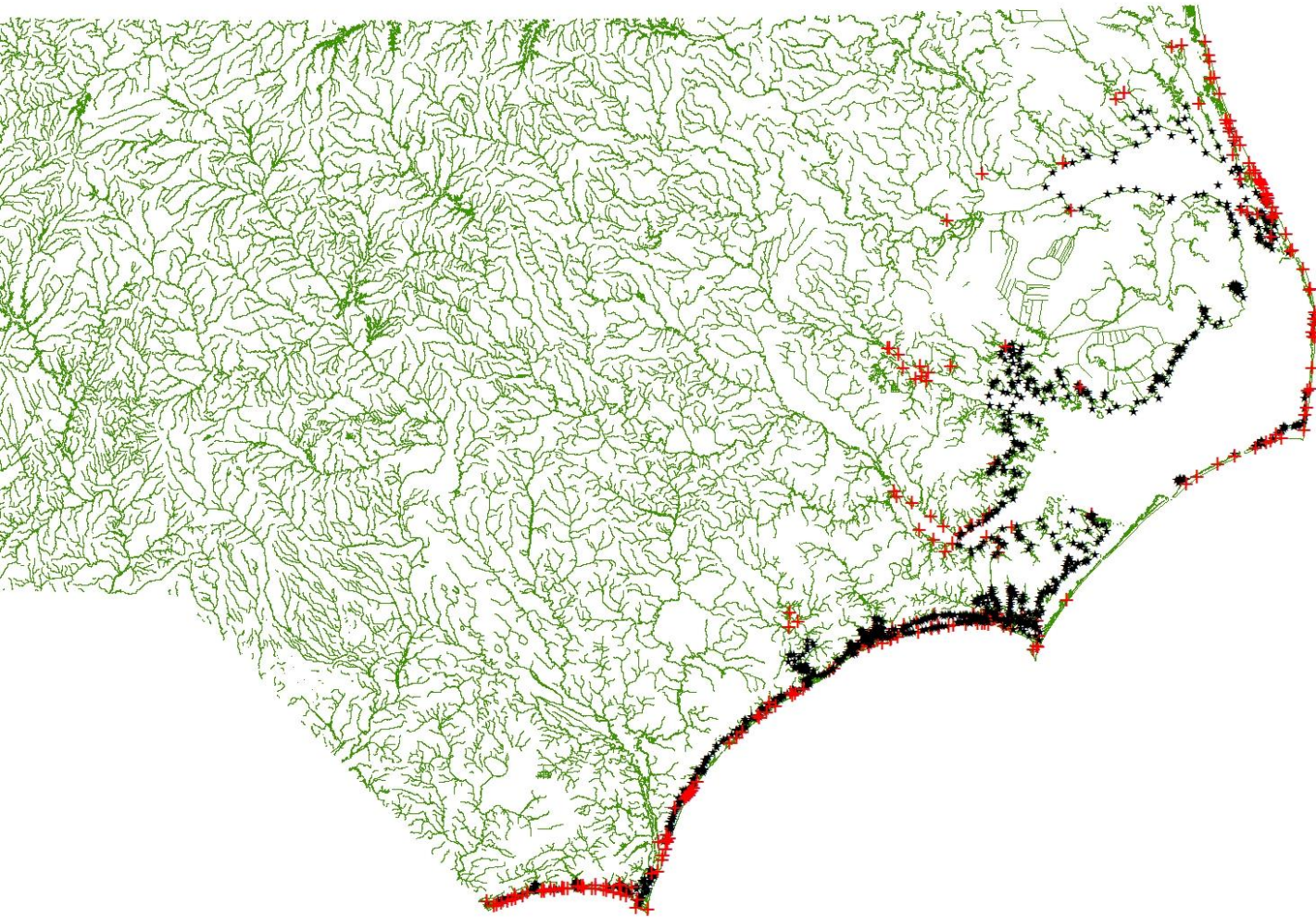
nc ams

Reservoir Lakes- Multiple Uses



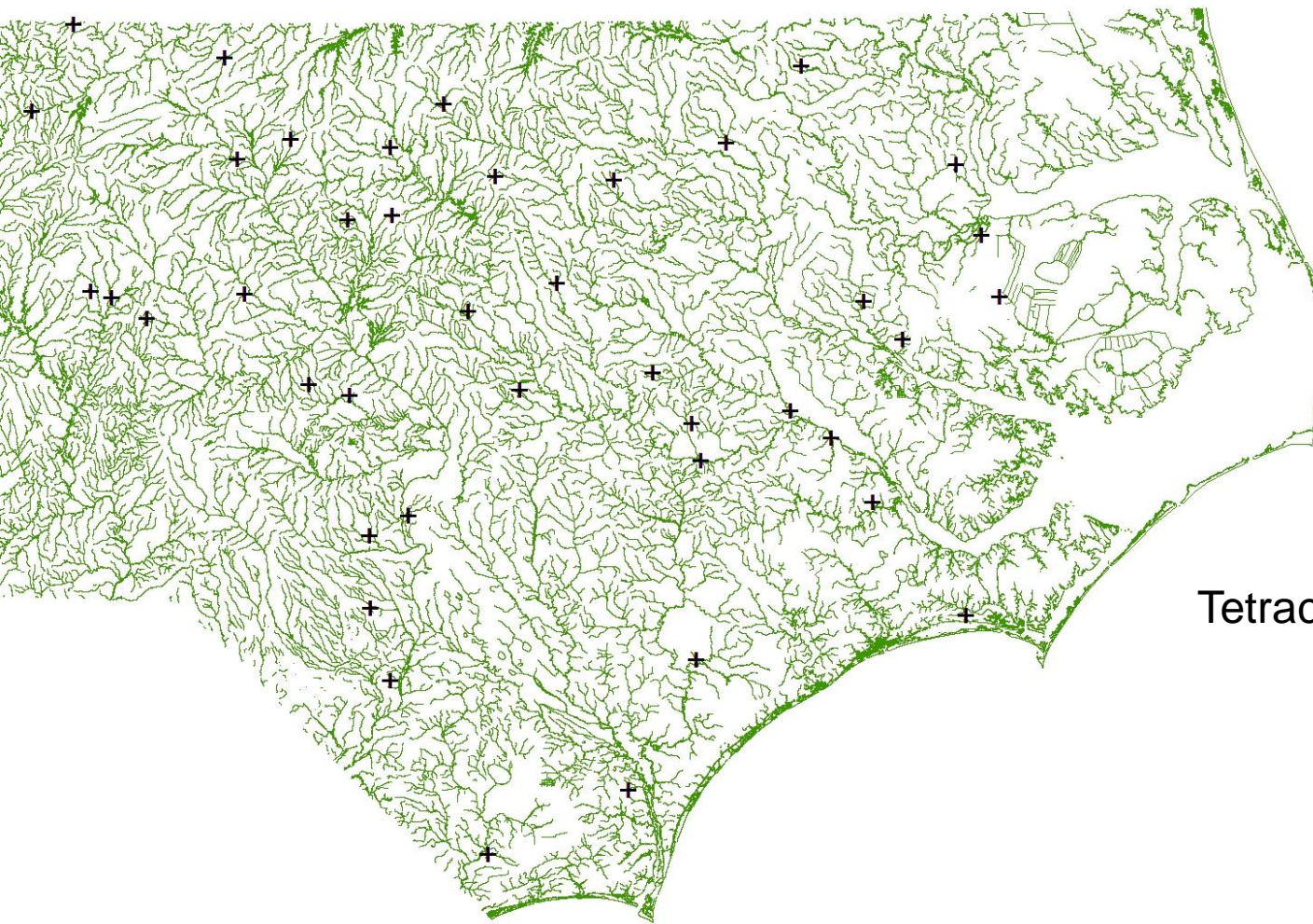
nc lake monitoring

Pathogen Indicators- Shellfish Harvesting and Recreational Water Quality



nc shellfish sanitation

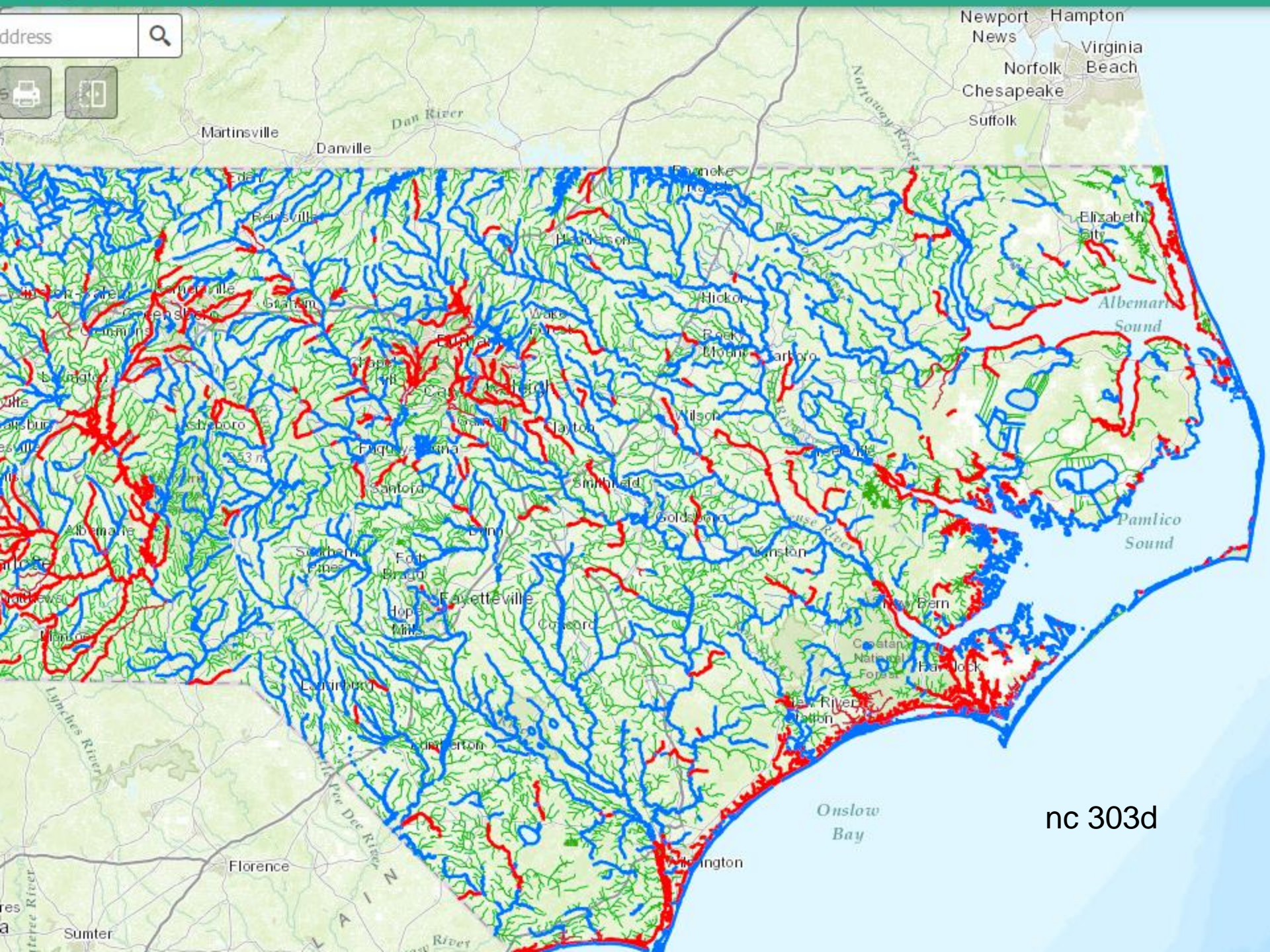
Random Ambient Monitoring-Multiple Uses



Aldrin to Zinc

Tetrachloroethane, 1,1,2,2-

nc random monitoring

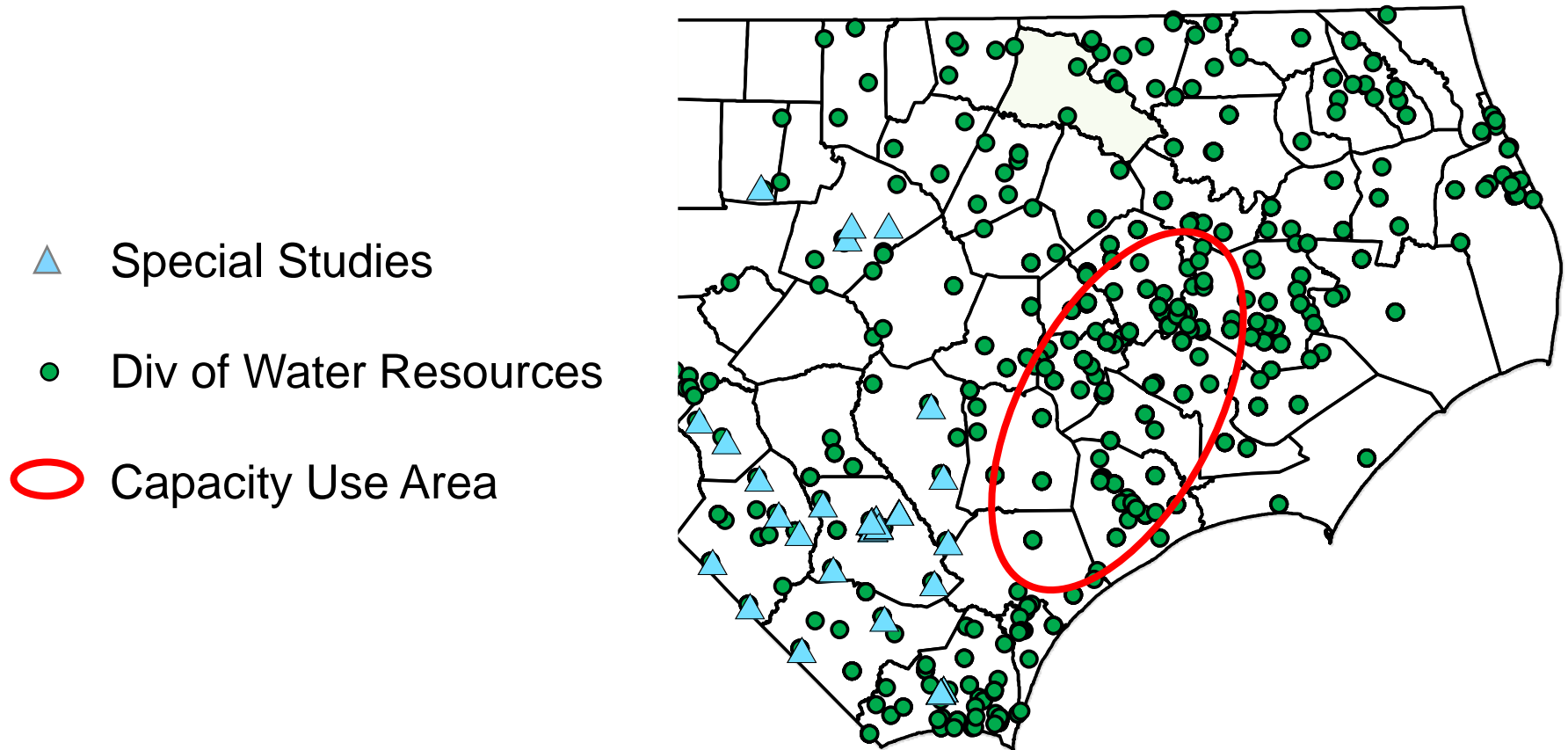


nc 303d

Groundwater Data

- Special water quality studies
 - Piedmont-Mountains REP
 - Southern Coastal Plain
 - Isolated Wetlands Hydrologic Connectivity
- Water level monitoring network – state wide
- Contamination monitoring and investigations
- Permitted facilities
 - Water quality protection – e.g. CAFO, UIC, Non-discharge
 - Water withdrawals – e.g. CCPCUA, large users

Groundwater Data



Groundwater Data

- Water level monitoring network
 - Drought management
 - Saltwater intrusion
 - Central Coastal Plain Capacity Use Area

- *DWR Website – Groundwater Management Branch*

<http://www.ncwater.org/?page=357>

- GW Levels
- Potentiometric Maps
- Geophysical Logs
- Hydrogeology
- Aquifer Characteristics

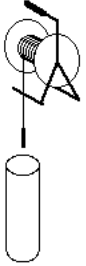
Division of Water Resources

[HOME](#) [CONTACTS & STAFF LISTING](#) [PUBLIC WATER SUPPLY](#) [WATER PLANNING](#)
[WATER QUALITY PERMITTING](#) [WATER QUALITY REGIONAL OPERATIONS](#) [WATER SCIENCES](#)

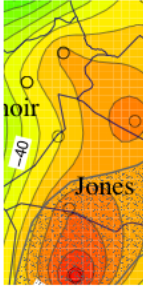
Search DWR...

Ground Water » Data

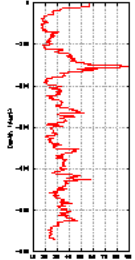
Ground Water Levels



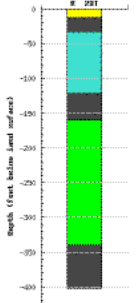
Potentiometric Surface Maps



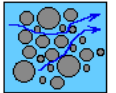
Geophysical Logs

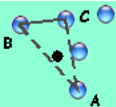


Hydrogeology

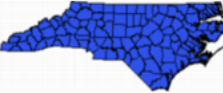


Aquifer Characteristics

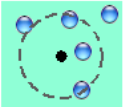




Visual Hydrogeologic Framework. Access the hydrogeologic, geophysical log, and ground water level databases through input of latitude, longitude and depth of well. Coverage is limited to the North Carolina coastal plain.



Ground Water Data Map Interface. Click on the North Carolina icon to use the map interface which allows you to view and query any of the data maintained by the Ground Water Management Branch. Works with IE > 8 and all other browsers. Click [here](#) to use the old Mapserver interface.

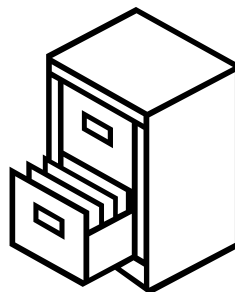
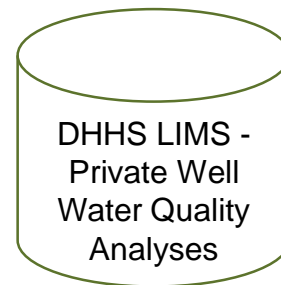
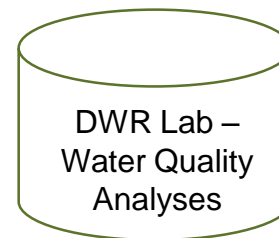
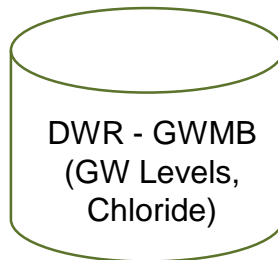
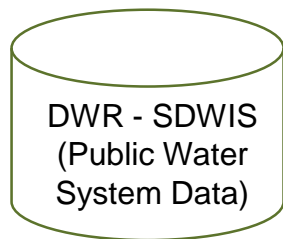
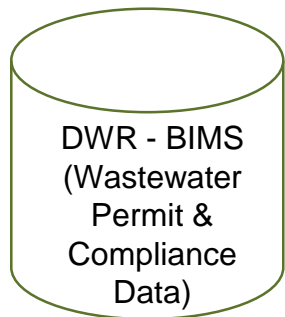


Search all the databases. Query all the databases for information near your point of interest.

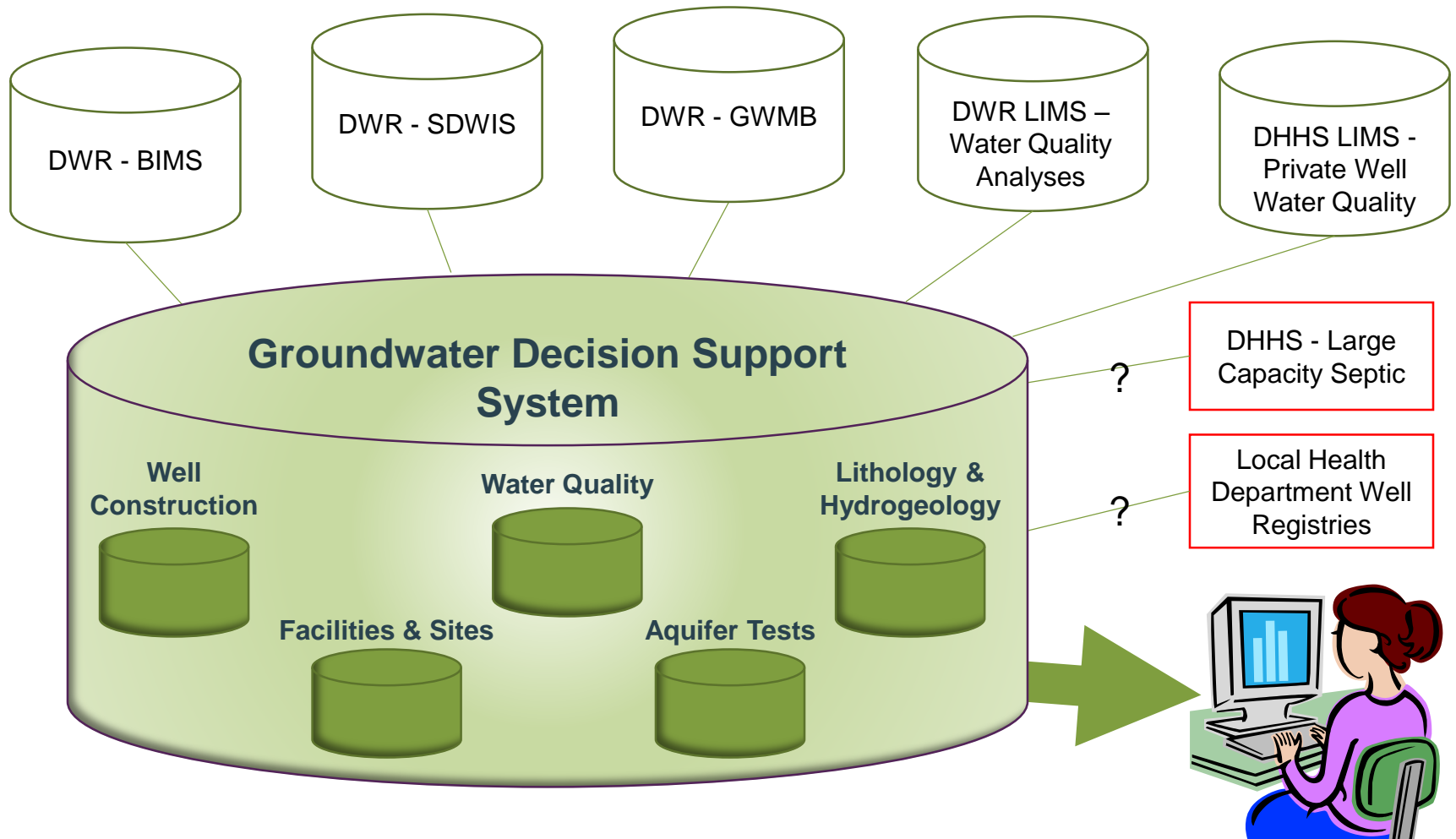
Groundwater Data Management Program Assessment

Department	DIVISION	SECTION	DATABASE
Health and Human Services	Public Health	Environmental Health	On-Site Water Protection
			Private Well Program
		State PH Lab	
Environmental Quality	Information Technology Services	Java Development Section	GWDSS
	Water Resources	Public Water Supply	SDWIS - Safe Drinking Water Information System
		Water Planning Section	CCPCUA (Central Coastal Plain Capacity Use Area)
		Water Quality Regional Operations	BIMS - Basinwide Information Management System
			GW-1 - Well Construction Records
			Ambient Monitoring/Resource Evaluation Program

NC Groundwater Data Management (2013)

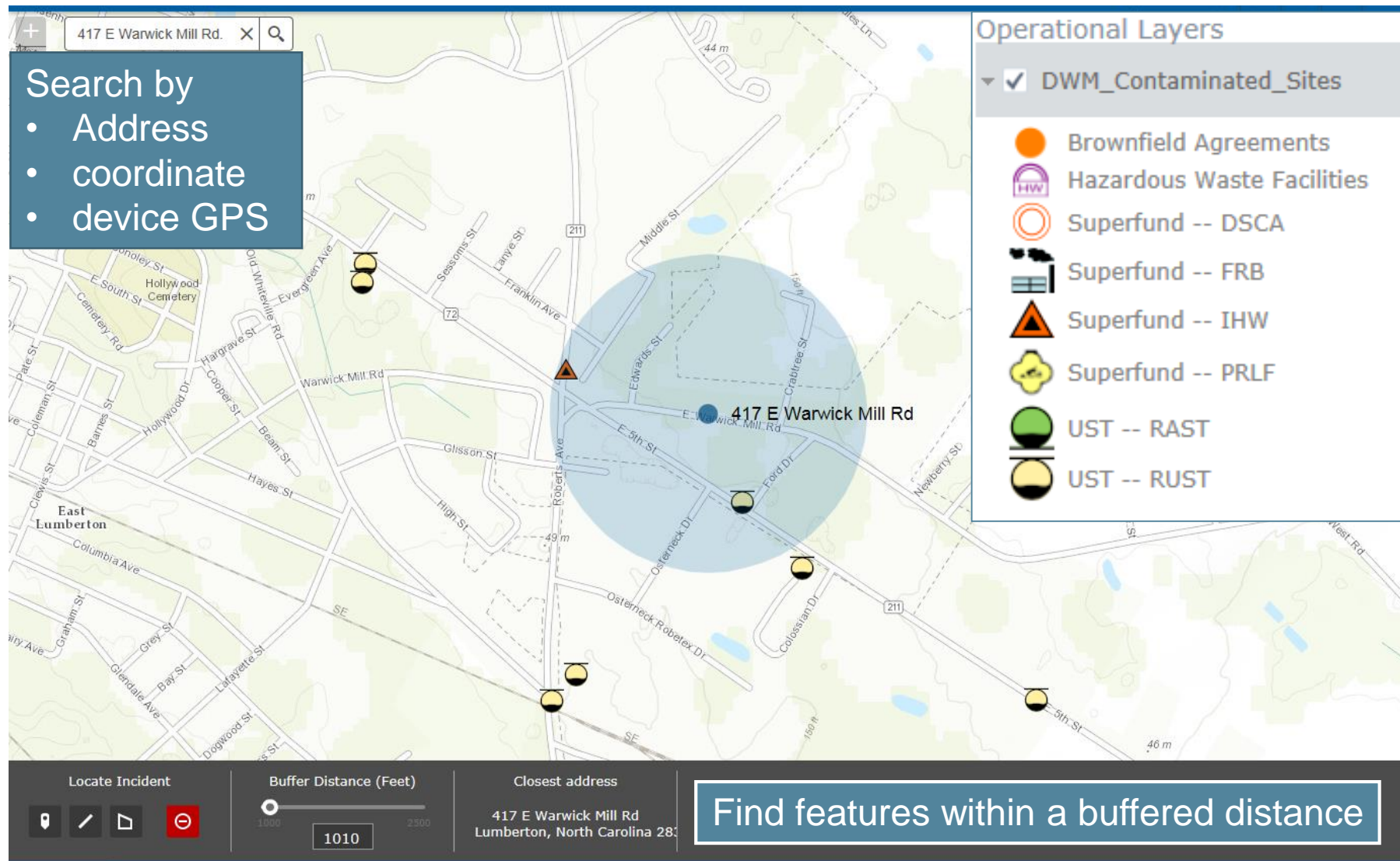


NC Groundwater Data Management: with GWDSS

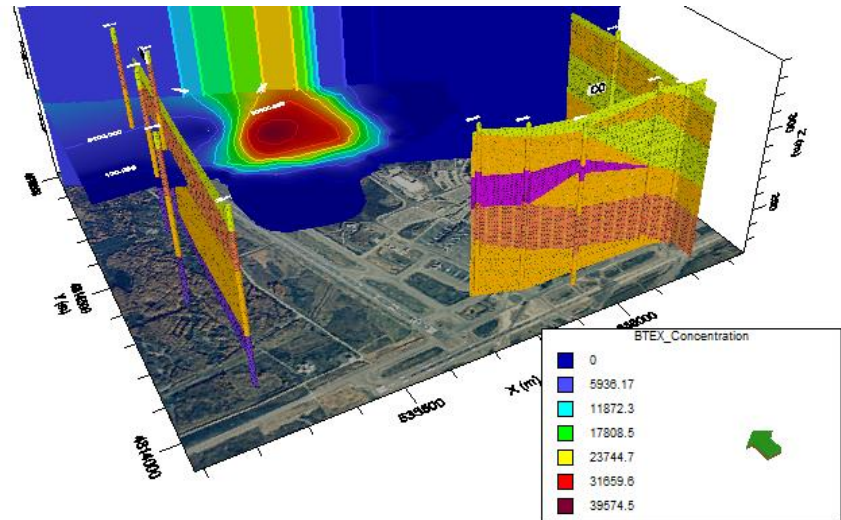
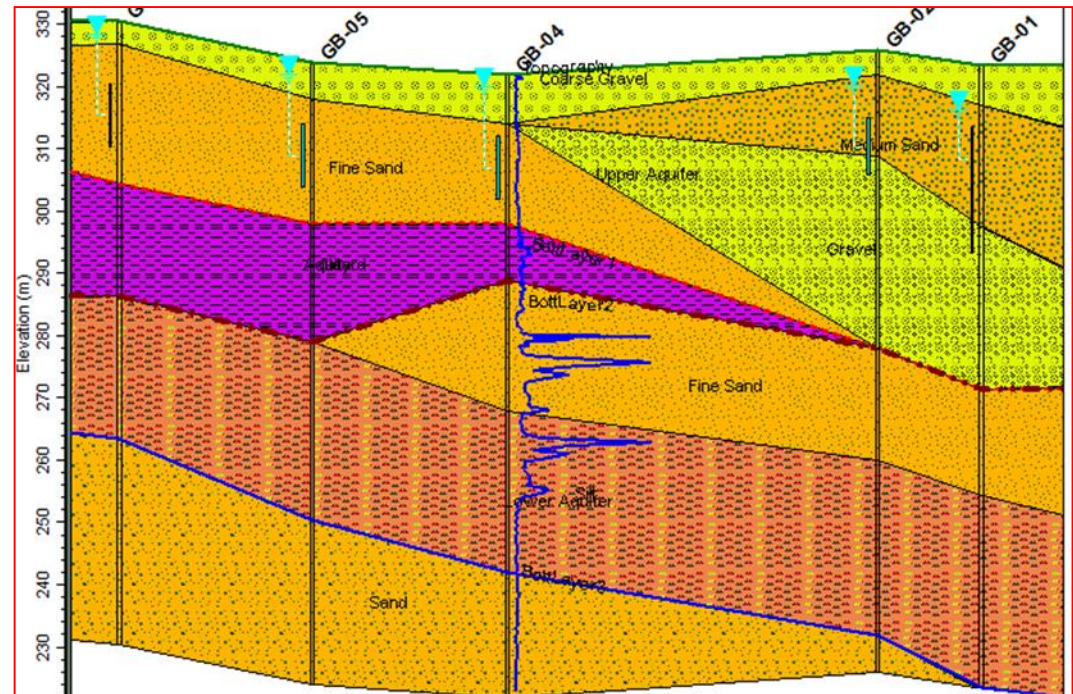
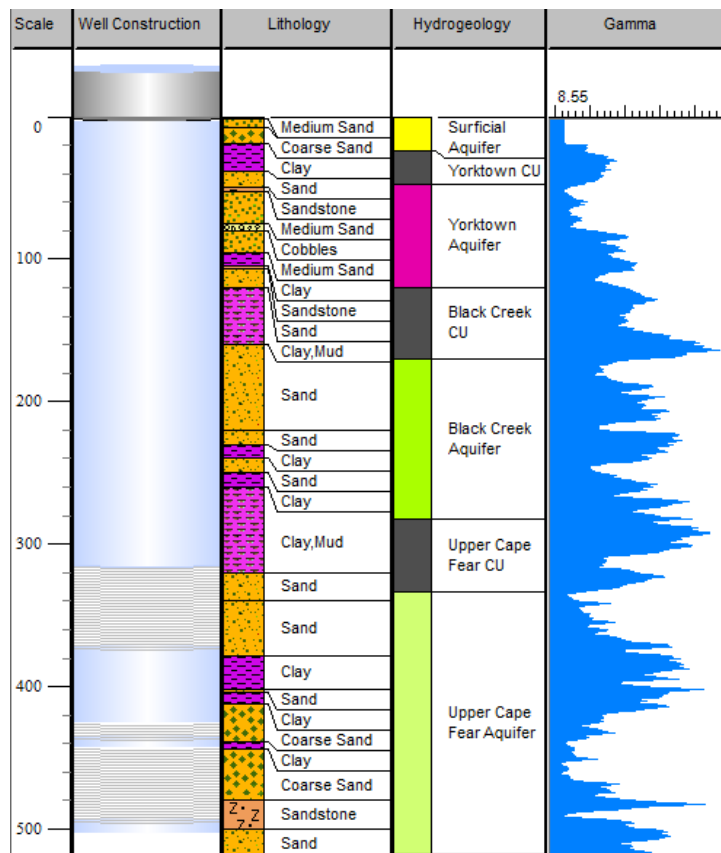


Improved Decision-Making by Data Integration

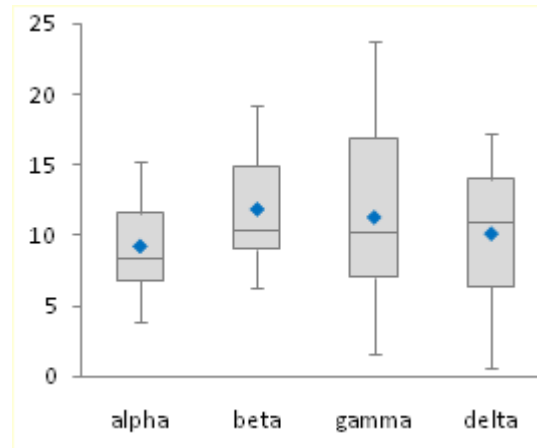
e.g. Private Drinking Water Well Education Act



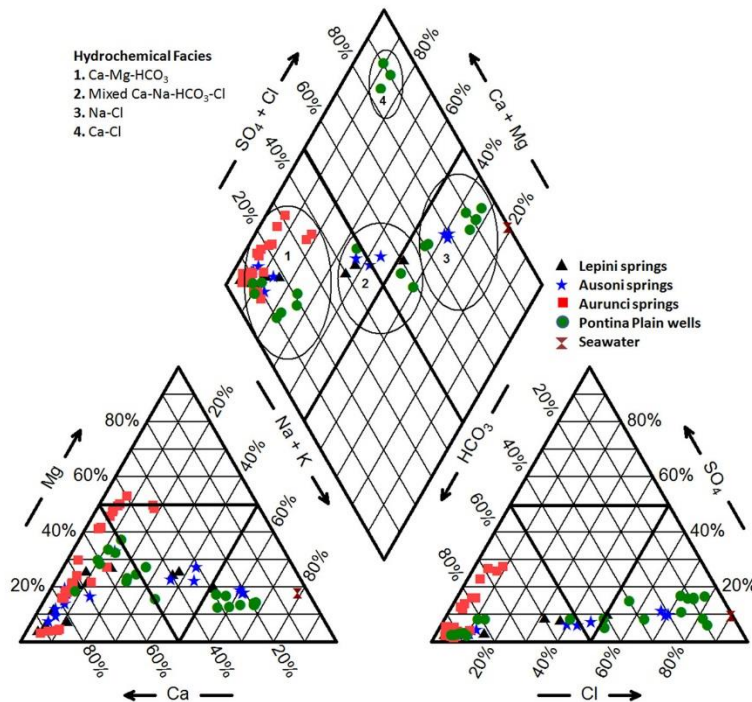
Hydrogeologic Analysis



Water Quality Analysis



<http://peltiertech.com/excel-box-and-whisker-diagrams-box-plots/>



http://file.scirp.org/Html/1-9401578_22721.htm

- Piper, Durov Diagrams, Ternary
- Pie, Stiff, and Radial Diagrams
- X-Y Scatter and Time Series Graphs
- Frequency Histograms
- Box and Whisker (+ time series)
- Geothermometer, Giggenbach Triangle
- Meteoric Water Line
- Quantile Plots
- Detection Summary
- Langelier-Ludwig, Wilcox Plots, Schoeller