

Parks with Purpose Project



Walnut Creek Wetland Community Partnership

— THE —
CONSERVATION FUND

ADDITIONAL PARTNERS

American Rivers
Carolina Wetlands Association
Center for Human and Earth Restoration
City of Raleigh: Dept. of Parks, Recreation and Cultural Resources; Stormwater Management Division; Office of Sustainability; Walnut Creek Wetland Park
Fuller Elementary School
Institute for Landscape Art and Sustainable Spaces
The JPB Foundation
NC State University: College of Natural Resources; College of Humanities and Social Sciences; Natural Learning Initiative
Partners for Environmental Justice
Pisces Foundation
Rochester Heights & Biltmore Hills residents
Shaw University
St. Ambrose Episcopal Church
Triangle Greenways Council

WHAT IS A PARK WITH PURPOSE?

Parks are important places in our communities, where kids can play and families can gather. With thoughtful planning these natural areas can also support other purposes, including absorbing and cleaning stormwater when it rains, supporting training programs for green jobs and meeting other community needs.



WALNUT CREEK WETLAND COMMUNITY PARTNERSHIP

This partnership provides a communication hub for residents, community stakeholders and academic and government leaders to collaborate on sustainable management of the wetlands. It also provides a platform for developing opportunities to benefit those who live, work and play in the surrounding community.

The Walnut Creek Wetland Community Partnership, the NC Water Resources Research Institute and The Conservation Fund are working hand-in-hand with residents and a variety of partners to identify, protect and restore land for a new park or greenspace. We believe this new space will provide a variety of benefits for the community.



Get Involved!

We are currently working to identify a potential location and develop plans for this new greenspace. Please join us to share what you would like to see in the park, help guide the planning process, and find out more about how you can get involved.

We meet regularly at St. Ambrose Church or the Wetland Park. Meeting details are posted at go.ncsu.edu/walnutcreekwetlandpartners

Protecting Our Community Wetlands



Pictured left: Children learning about the importance of wetlands at the Norman and Betty Camp Education Center and searching for butterflies around the watershed.

Wetlands are low-lying lands that collect water, have soggy soil and are home to a variety of plants and animals. Wetlands act as sponges and filters, helping to absorb water during rain events. The Walnut Creek wetlands in southeast Raleigh also help remove pollution and reduce flooding from water flowing out of downtown Raleigh and Cary. The wetlands also provide a natural outdoor space for people to enjoy.

History of the Walnut Creek Wetlands

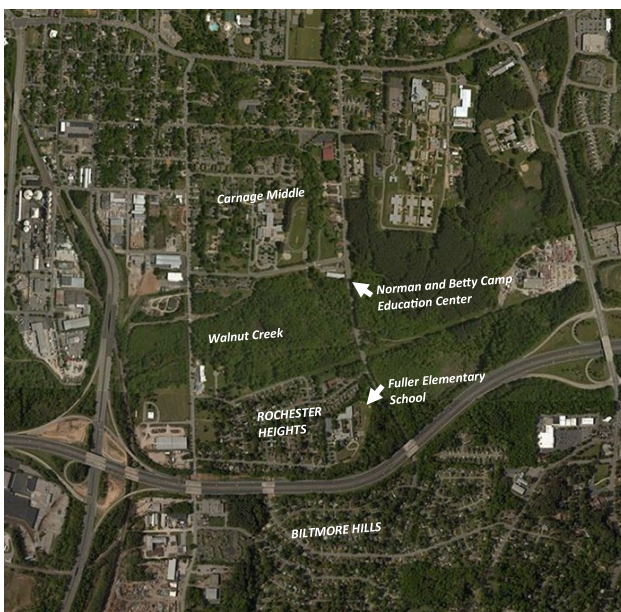
The Walnut Creek Wetlands were once largely owned by an African-American family, the Youngs, who farmed the land for a variety of crops. The family had ties with the Brimley brothers (Herbert Hutchinson and Clement Samuel) who collected and studied samples of animal and plant life from the wetlands. These studies ultimately led to the creation of the NC State Museum of Natural Sciences.

South of the wetlands are the Rochester Heights and Biltmore Hills communities, the first post-World War II neighborhoods built for African-Americans in Raleigh.



The Young family pictured in 1936 on the site where Fuller Elementary School now stands.

A vision and community goals for our Parks with Purpose project:



- Improved stream banks and reduced flooding
- Community programs and festivals
- Support for current residents to reduce displacement
- Intergenerational engagement
- Neighborhood access to Walnut Creek and Wetlands Park
- Community Science programs
- Increased cultural, historical and environmental awareness
- Job training and skills building
- A healthier and more resilient community

**CONTACT
US TO GET
INVOLVED**

Christy Perrin
Christy_perrin@ncsu.edu

Louie Rivers
Lrivers@ncsu.edu