

Parks with Purpose Project May 2019 Update



Walnut Creek Wetland Community Partnership



ADDITIONAL PARTNERS

American Rivers
Carolina Wetlands Association
Center for Human and Earth Restoration
City of Raleigh: Dept. of Parks, Recreation and Cultural Resources; Stormwater Management Division; Office of Sustainability; Walnut Creek Wetland Park
Fuller Elementary School
Institute for Landscape Art and Sustainable Spaces
The JPB Foundation
NC State University: College of Natural Resources; College of Humanities and Social Sciences; Natural Learning Initiative
Partners for Environmental Justice
Pisces Foundation
Rochester Heights & Biltmore Hills residents
Shaw University
St. Ambrose Episcopal Church
Triangle Greenways Council

WHAT IS A PARK WITH PURPOSE?

Parks are important places in our communities, where kids can play and families can gather. With thoughtful planning, these natural areas can also support other purposes, including absorbing and cleaning stormwater when it rains, supporting training programs for green jobs, and meeting other community needs.



PARKS WITH PURPOSE GRANT IN 2019

This grant from The Conservation Fund is for engaging community in identifying and installing an outdoor place, such as a small park or greenway segment, or rain garden, that can serve both nature and the people who live near it. Our current focus area is Rochester Heights and Biltmore Hills. Their proximity to a nature park has great potential to leverage benefits for residents and their families.

The grant has some funding to put something in the ground and to hire community members to help install and manage the park. An array of sites surrounding the Wetland Park were identified and will be included in a vision plan. A parcel south of Walnut Creek along Bailey Dr was selected as the site for our first new green space. If we can find more funding, other sites may be implemented later!



Get Involved!

We have selected a parcel south of Walnut Creek along Bailey Dr as the site for our first new green space. Please join us to help guide the design process, and find out more about how you can get involved.

We meet regularly at St. Ambrose Church or the Wetland Park. Meeting details and summaries are posted at: go.ncsu.edu/walnutcreekwetlandpartners

Community Task Force Vision and Progress



A Family Fun event held at St. Ambrose Church invited community to share ideas about parks.

The Community Task Force includes:

- Rochester Heights and Biltmore Hills residents
- Partners for Environmental Justice
- Neighborhood Ecology Corps middle and high school students
- St. Ambrose Church
- Institute for Landscape Arts and Sustainable Spaces
- Fuller Elementary School
- Support from NC State University, City of Raleigh, The Conservation Fund, Shaw University and others.

A vision and community goals for our Parks with Purpose project:

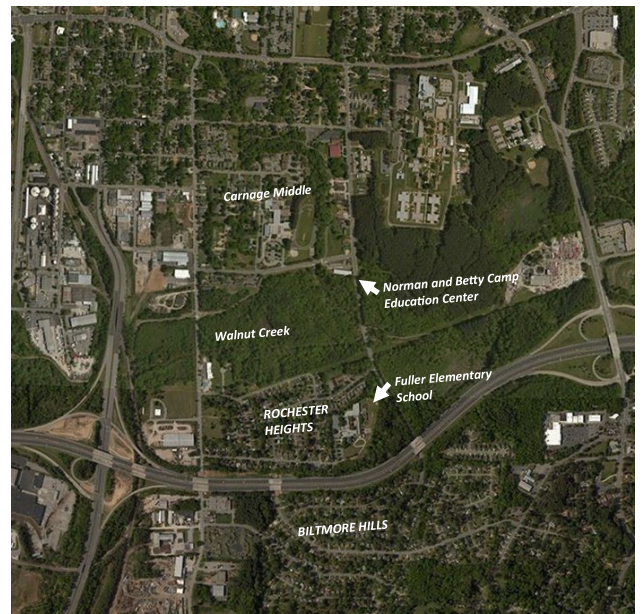
The Task Force developed the following goals for this project:

- Improve neighborhood access to Walnut Creek and Walnut Creek Wetland Park
- Engage people of all ages
- Improve stream banks and reduce flooding
- Create attractive natural areas
- Organize community programs and festivals
- Support community science programs
- Increase cultural, historical, and environmental awareness

An array of potential projects

The Task Force identified many potential projects, then narrowed the list to those that could possibly address their goals without needing to purchase land. These include (first priorities are in **bold**):

- **Provide outdoor amenities on Bailey St., such as gathering spaces, trails and access to Walnut Creek, for various aged users**
- **Manage/thin plants south of Walnut Creek**
- Provide a nature playground at the Wetland Park
- Create/install neighborhood wayfinders to parks, greenways and cultural places
- Provide access to greenway from Rock Quarry Road and add educational signs
- Install an arboretum/community garden/amphitheater on Peterson St.
- Install green infrastructure like rain gardens to reduce stormwater at Fuller Elementary
- Restore/enhance Walnut Creek's banks



- Control street flooding at neighborhood access points and State St.
- Improve greenway access for seniors
- Monitor water levels in streams and streets

What's next? The Conservation Fund will hire a design and engineering team to create site plans for the Walnut Creek Wetland Park parcel located south of Walnut Creek. This unique site contains opportunities to invite people to experience wetlands. We will seek to engage community members in creating and reviewing site plans and in sharing feedback about other opportunities.

**CONTACT
US TO GET
INVOLVED**

Christy Perrin
Christy_perrin@ncsu.edu

Louie Rivers
Lrivers@ncsu.edu