

Parks with Purpose Project– Summer 2019



Walnut Creek Wetland Community Partnership

THE
CONSERVATION FUND

Why get involved?

- Opportunity to learn about your local wetland and why it is important to the health of the community
- Get involved with organizations that focus on local environmental justice and equity
- Get connected to local organizations focusing on youth-led environmental stewardship
- Explore recreational opportunities at the Walnut Creek Wetland Park
- Learn about local green workforce training
- Help make decisions about the Bailey Dr. park site and related programs
- Voice concerns and questions about this project and development of the Walnut Creek Wetland Park .

WHAT IS A PARK WITH PURPOSE?

Parks are important places in our communities, where kids can play and families can gather. With thoughtful planning these natural areas can also support other purposes, including absorbing and cleaning stormwater when it rains, supporting training programs for green jobs, environmental education, and meeting other community needs. This project involves collaborative community-based decision-making around equity and environmental justice.

WHAT IS OUR PROJECT?

- The Community Task Force chose to improve a parcel on Bailey Dr. after months of participatory processes. The parcel is part of the Walnut Creek Wetland Park and is owned by the City of Raleigh.
- We are in the process of choosing a design firm to design and develop the site.
- The next step is for community to help determine what the actual features of the park site will be.
- We seek to engage more residents in Rochester Heights and Biltmore hills in the project- we'd love feedback!

Walnut Creek Wetland Community Partnership

This partnership provides a communication hub for residents,



community stakeholders and academic and government leaders to collaborate on sustainable management of the wetlands. It also provides a platform for developing opportunities to benefit those who live, work and play in the surrounding community.



Get Involved!

We are working to identify community desires for this new greenspace. Check out our Facebook page for updates at <https://www.facebook.com/walnutcreekwetlandcommunitypartnership/>

We meet regularly at St. Ambrose Church or the Wetland Park. Meeting details are posted at go.ncsu.edu/walnutcreekwetlandpartners

Protecting Our Community Wetlands



A Family Fun event held at St. Ambrose Church invited community to share ideas about parks.

The Community Task Force includes:

- Rochester Heights and Biltmore Hills residents
- Partners for Environmental Justice
- Neighborhood Ecology Corps middle and high school students
- St. Ambrose Church
- Institute for Landscape Arts and Sustainable Spaces
- Fuller Elementary School
- Support from NC State University, City of Raleigh, The Conservation Fund, Shaw University and others.

History of the Walnut Creek Wetlands

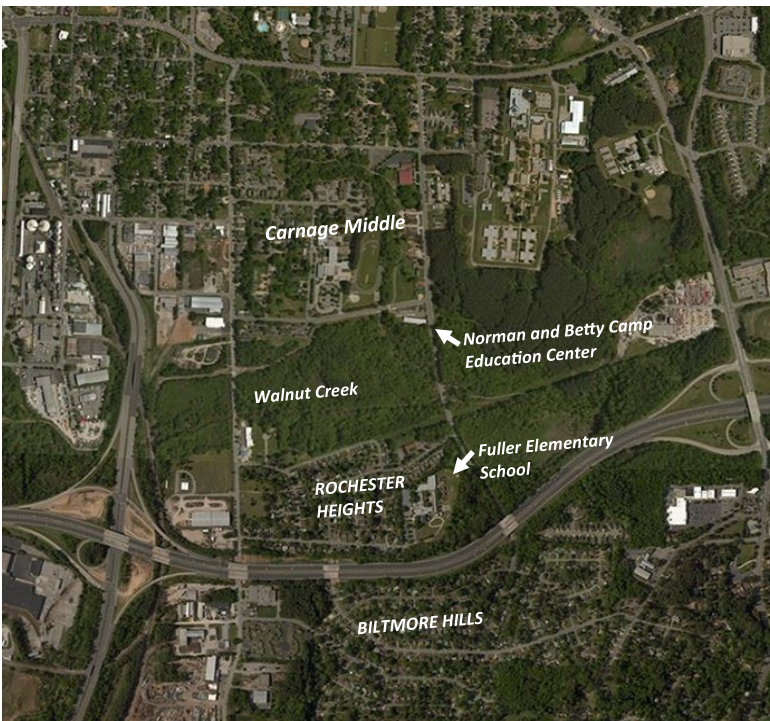
The Walnut Creek Wetlands were once largely owned by an African-American family, the Youngs, who farmed the land for a variety of crops. The family had ties with the Brimley brothers who collected and studied samples of animal and plant life from the wetlands. These studies led to the creation of the NC State Museum of Natural Sciences.

Wetlands are low-lying lands that collect water, have soggy soil and are home to a variety of plants and animals. They help control flooding. South of the wetlands are the Rochester Heights and Biltmore Hills communities, the first post-World War II neighborhoods built for African-Americans in Raleigh.



The Young family pictured in 1936 on the site where Fuller Elementary School now stands.

A vision and community goals for our Parks with Purpose project:



- Improved stream banks and reduced flooding
- Community programs and festivals
- Engage all ages together
- Neighborhood access to Walnut Creek and Wetlands Park
- Community science programs
- Increased cultural, historical and environmental awareness
- Job training and skills building
- Support for current residents to reduce displacement

**CONTACT
US TO GET
INVOLVED**

Christy Perrin
Christy_perrin@ncsu.edu
919-513-1152
Louie Rivers
Lrivers@ncsu.edu