



# Haw River Assembly

Emily Sutton



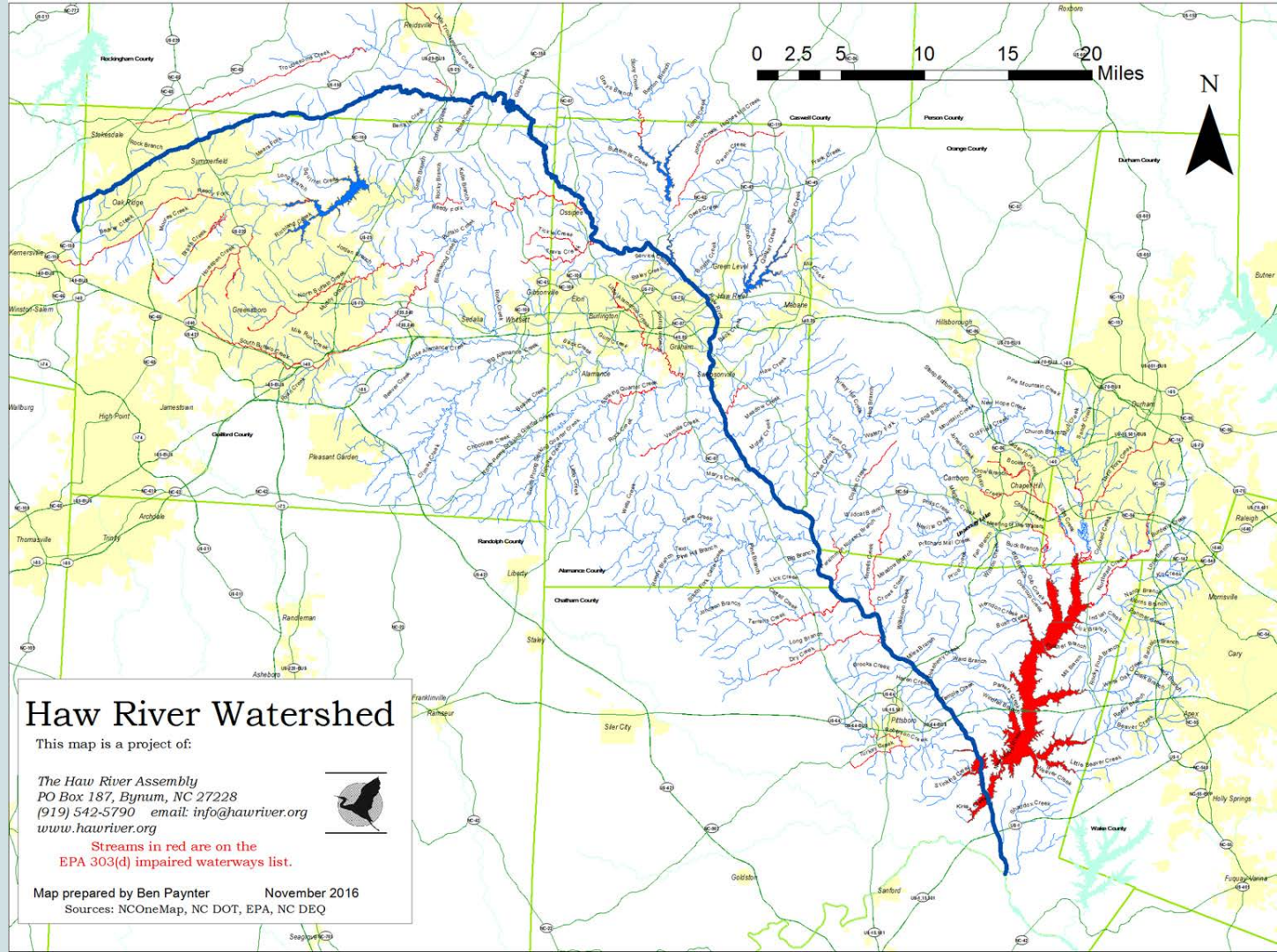
## Haw River Assembly protects the Haw River Watershed.

This includes nine hundred and twenty miles of streams feeding into the Haw along the 110 miles of the river, the 14,000 acres of Jordan Lake, and the plants, animals, and people who depend on the river.



- *Outreach and Education*  
*Public Clean-up events, school programs, outdoor hikes and paddles*
- *Surface Water Monitoring throughout watershed*
- *Volunteer projects to watchdog pollution problems*
- *Partner with scientific community and other Riverkeepers on larger statewide projects*
- *Partner with legal policy experts to advocate for protective environmental laws*
- *Use legal action when necessary to uphold Clean Water Act*





## Haw River Watershed

This map is a project of:

*The Haw River Assembly*  
PO Box 187, Bynum, NC 27228  
(919) 542-5790 email: [info@hawriver.org](mailto:info@hawriver.org)  
[www.hawriver.org](http://www.hawriver.org)



Streams in red are on the  
EPA 303(d) impaired waterways list.

Map prepared by Ben Paynter November 2016  
Sources: NOneMap, NC DOT, EPA, NC DEQ

# River Watch Program

- 35 teams throughout watershed
- Macroinvertebrate sampling
- Chemical Analysis
  - pH, Dissolved oxygen, temperature, etc.
- Physical Analysis
  - Transparency
  - Erosion, floodplain access, etc.
- Data sent to DEQ annually







Haw River Assembly

Muddy Water  
Watch Project



Nutrient pollution is one of America's most widespread, costly, and challenging environmental problem.

- E.P.A, March 2017





---

## Project Goals

---

- Gain a clearer picture of problems in the Haw and its tributaries
- Gather data needed for better laws and enforcement to prevent sedimentation issues
- Empower citizens to protect their creeks and the Haw River





# Learning Celebration

Began in 1990 and has continued to change and grow each year for 27 years.

3 week long environmental education program held in 3 counties: Chatham, Alamance, Guilford.

Volunteers lead 4th graders through hands-on exploration of the river environment.

Learning Stations include nature art, stream ecology, watershed cultural history, and animals.

All meet NCSCOS Competency Goals for 4th grade.

All activities inspire students to think about how human actions affect the river and its





# Other Issues in the Haw

- *Industrial Contaminants*  
*Wastewater Treatment Plants*  
*Biosludge Application*  
*Drinking Water Contamination*  
*Public and Private*
- *Nutrient Pollution*  
*Jordan Lake/ Impaired Waterways list*



# Other Annual Events

## And Fundraisers

---

Haw River Festival

Clean-up-athon

School Programs

Annual Meeting



# Other Fundraising Strategies

---

Grants!

Membership fees

Annual Donations

Kickstarters for specific projects

Meet and Greets/ Outreach  
Events







# Successes and Failures *Lessons in* Fundraising

---

- Silent Auction events
  - Local businesses support Environmental causes
  - Breweries, Wineries, Distilleries (Good P.R)
  - Art Community
- Meet and Greet events
- Paddles with local outfitters
  - Persistence!



Questions?